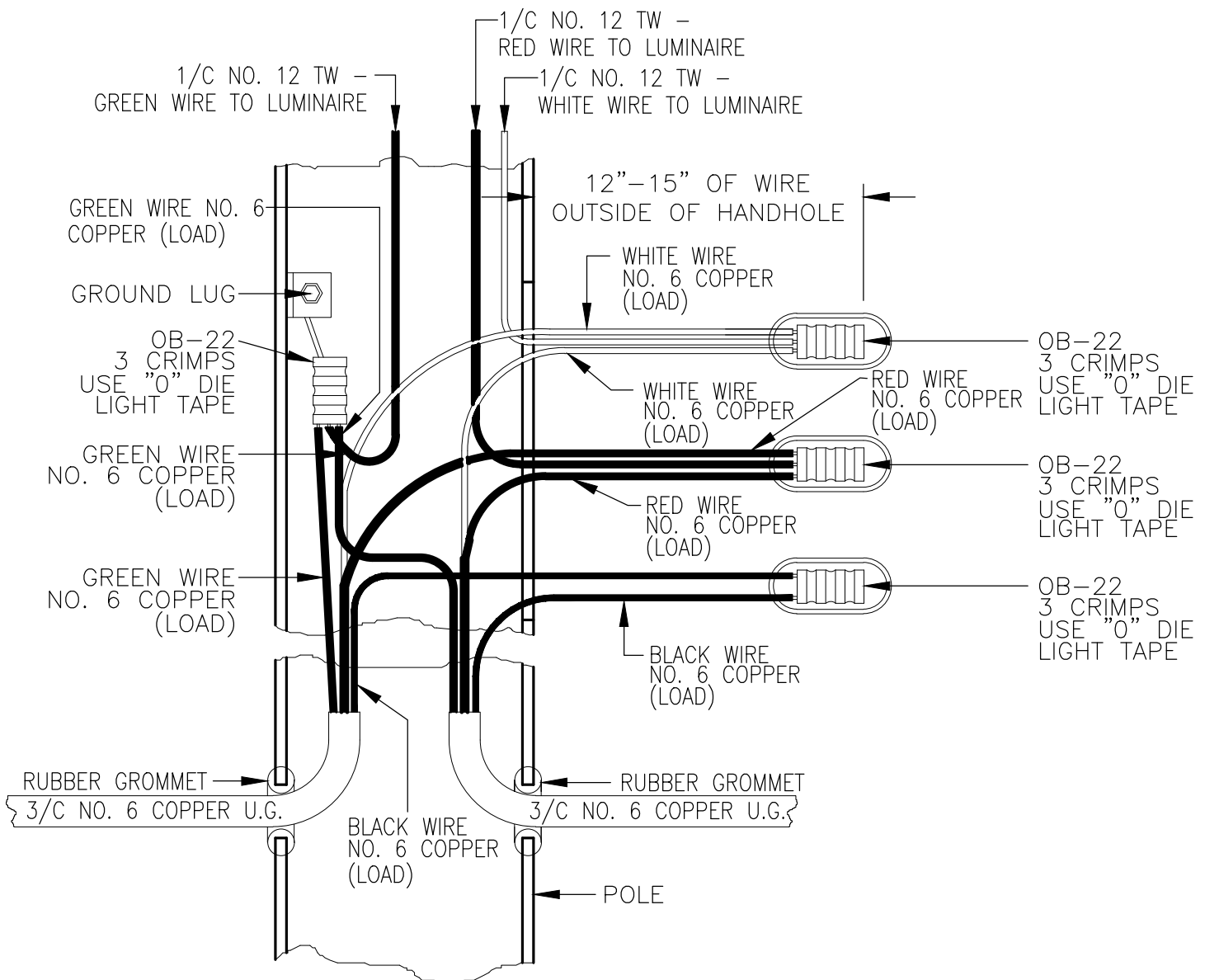




GENERAL NOTES:

- 1.) Junction poles shall be terminated in a like manner – load to load – neutral to neutral – ground to ground.
- 2.) There shall be no splicing between poles, power sources and/or handholes.
- 3.) Total circuit amps shall not exceed 75% of fuse or relay rating 15 minutes after being energized.
- 4.) All wire shall be multi – stranded copper.



TYPICAL 120/240 VOLT UNDERGROUND INSTALLATION