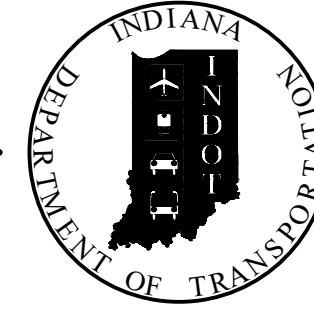


PROJECT	DESIGNATION
1902836	1902836
CONTRACT	BRIDGE FILE
B-42843	02-00113

STRUCTURE INFORMATION				
STRUCTURE	TYPE	SPAN AND SKEW	OVER	STATION
02-00113	REHABILITATION TO PRESTRESSED BOX BEAM BRIDGE	3 SPANS: 25'-10 3/4", 28'-3", 25'-10 3/4" SKEW 20° LT.	BULLERMAN DITCH	☉ STRUCTURE STA.5+16.10 "A"

# INDIANA DEPARTMENT OF TRANSPORTATION



## BRIDGE REHABILITATION PLANS

FOR SPANS OVER 20 FEET  
ROUTE: GOEGLEIN ROAD

PROJECT NO. 1902836 P.E.  
R/W  
1902836 CONST.

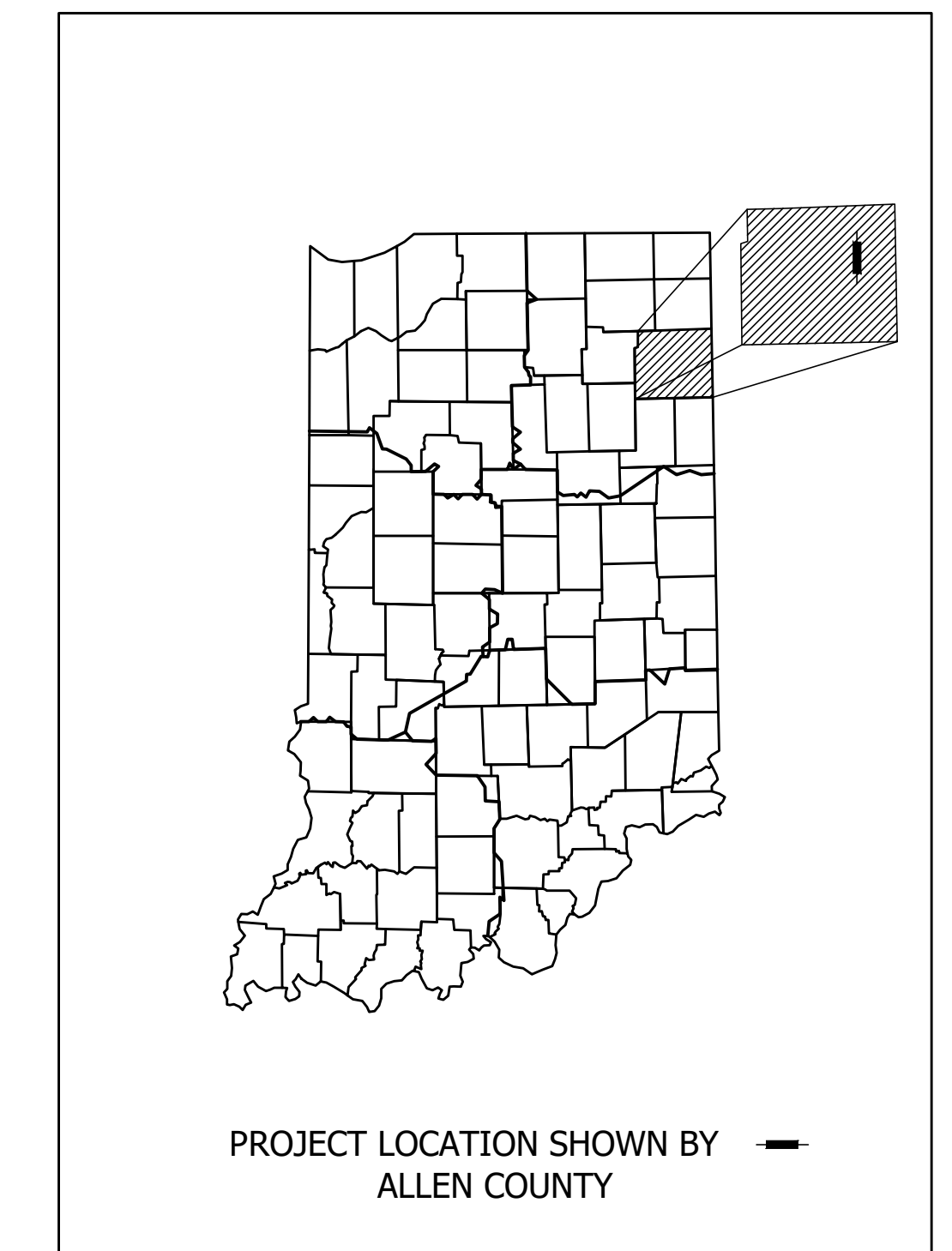
NO ADDITIONAL RIGHT-OF-WAY  
REQUIRED FOR THIS PROJECT

Superstructure Replacement on Goeglein Road over Bullerman Drain  
Located 0.20 Miles South of Trier Road in  
Section 26, T-31-N, R-13-E, St. Joseph Township, Allen County, Indiana

TRAFFIC DATA		
A.A.D.T. (2025)		3,224 V.P.D.
A.A.D.T. (2045)		5,823 V.P.D.
D.H.V (2045)		874 V.P.H.
DIRECTIONAL DISTRIBUTION		50 %
TRUCKS		5 % A.A.D.T. 5 % D.H.V.

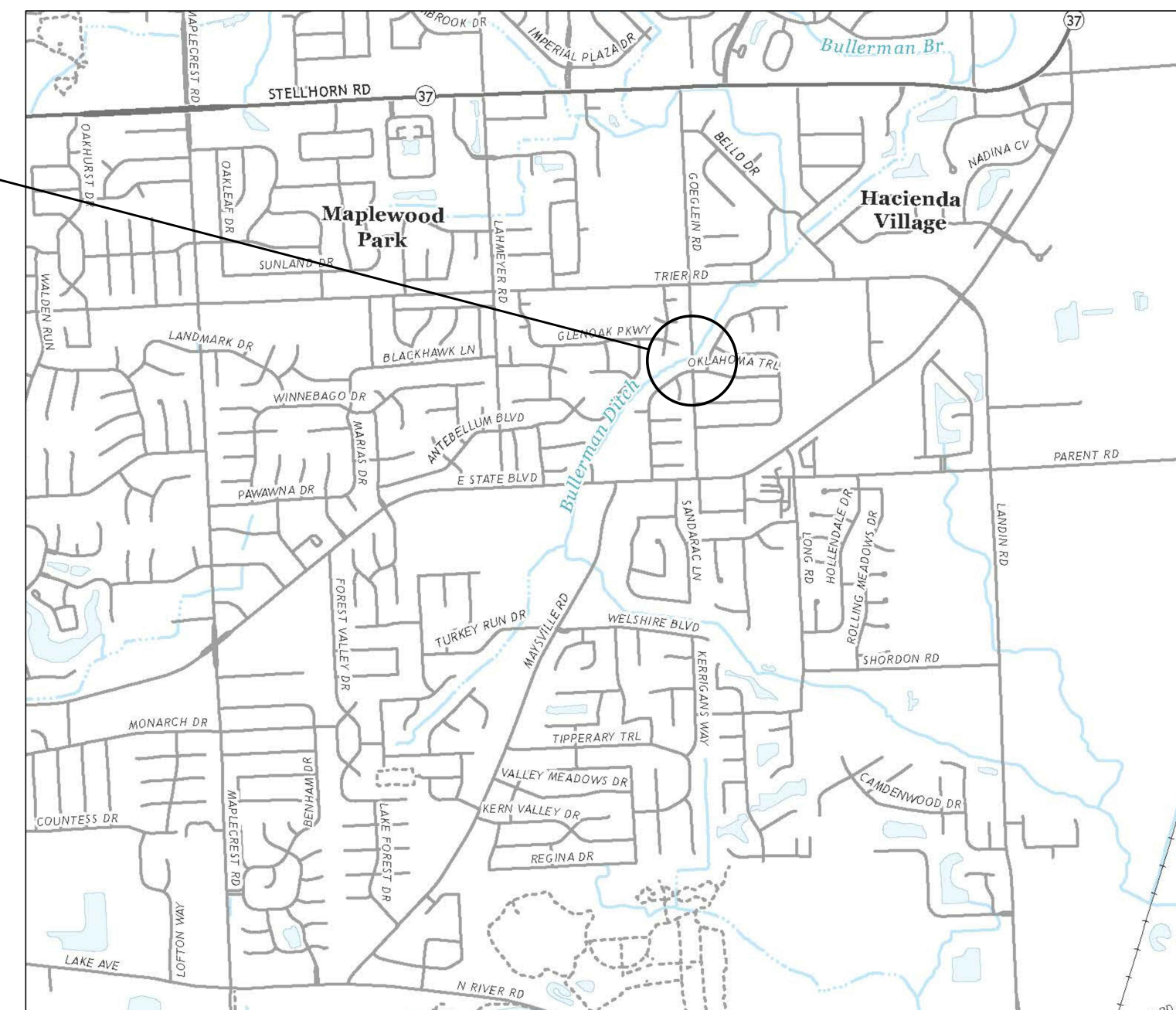
  

DESIGN DATA		
DESIGN SPEED		40 M.P.H.
PROJECT DESIGN CRITERIA		3R NON-FREEWAY
FUNCTIONAL CLASSIFICATION		MINOR COLLECTOR
RURAL/URBAN		URBAN
TERRAIN		LEVEL
ACCESS CONTROL		NONE



LATITUDE: 41°06'40.5" N	LONGITUDE: 85°02'12.7" W
BRIDGE LENGTH: 0.015 MI.	
ROADWAY LENGTH: 0.048 MI.	
TOTAL LENGTH: 0.063 MI.	
MAX. GRADE: -0.86 %	
HUC 12: 041000050102 HUC 14: 04100005010040	

PROJECT LOCATION  
Begin Project-Sta.3+70.00 "A"  
End Project-Sta.7+00.00 "A"



LOCATION MAP  
SCALE: 1:24000

APPROVED BY \_\_\_\_\_ DATE \_\_\_\_\_

BOARD OF COMMISSIONERS

APPROVED BY \_\_\_\_\_ DATE \_\_\_\_\_

CITY ENGINEER - FORT WAYNE

ATTESTED \_\_\_\_\_ DATE \_\_\_\_\_

ALLEN COUNTY AUDITOR

PLANS PREPARED BY:



PLANS PREPARED BY: BEAM, LONGEST & NEFF, LLC	(317)849-5832 PHONE NUMBER
CERTIFIED BY: _____	DATE _____
APPROVED FOR LETTING: _____	DATE _____
INDIANA DEPARTMENT OF TRANSPORTATION	

INDIANA DEPARTMENT OF TRANSPORTATION  
STANDARD SPECIFICATIONS DATED 2022  
TO BE USED WITH THESE PLANS.

BRIDGE FILE	
02-00113	
DESIGNATION	
1902836	
DRAWING NO.	SHEETS
	1 of 16
CONTRACT	PROJECT
B-42843	1902836

### UTILITIES

AMERICAN ELECTRIC POWER  
110 E Wayne Street  
Fort Wayne, IN 46802  
Attn: J. Jay Marlow  
Ph: 260-408-3447  
Email: jjmarlow@aep.com

ZAYO BANDWIDTH FIBER OPTIC  
9209 Castlegate Dr.  
Indianapolis, IN 46256  
Attn: Waylon Higgins  
Ph: 765-341-1199  
Email: waylon.higgins@zayo.com

COMCAST CABLE (FORT WAYNE)  
720 Taylor Street  
Fort Wayne, IN 46802  
Attn: David Harris  
Ph: 260-410-3567  
Email: david\_harris@cable.comcast.com

CITY OF FORT WAYNE  
1 E Main Street  
Fort Wayne, IN 46802  
Attn: Mario Trevino  
Ph: 260-427-1136

FRONTIER TELEPHONE  
Attn: Joe Sarll  
Ph: 260-461-3324  
Email: joseph.a.sarll@ftr.com

NIPSCO GAS (FORT WAYNE)  
Attn: Dave Schaafsma  
Email: utilitycoordination@nisource.com



### INDEX

SHEET NO.	SHEET DESIGNATION	SUBJECT
1		TITLE SHEET
2		INDEX SHEET
3		TYPICAL CROSS SECTIONS
4		MAINTENANCE OF TRAFFIC
5		PLAN & PROFILE - LINE "A"
6		CONSTRUCTION LAYOUT DETAILS
7	C1	LAYOUT- LINE "A"
8 - 10	C2 - C4	GENERAL PLAN
11		BRIDGE SUMMARY OF QUANTITIES
12 - 13		ROAD SUMMARY OF QUANTITIES
14 - 16		CROSS SECTIONS - LINE "A"

### REVISIONS

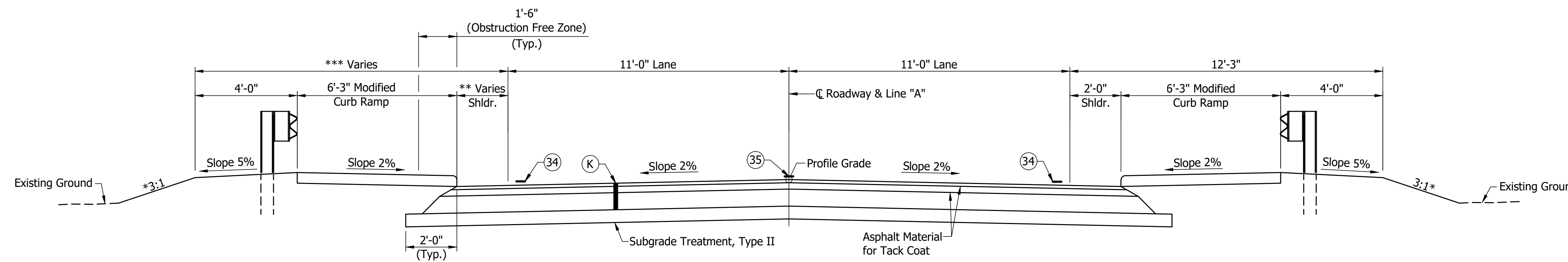
SHEET NO.	DATE	REVISED

		RECOMMENDED FOR APPROVAL _____	DESIGN ENGINEER _____	DATE _____	INDIANA DEPARTMENT OF TRANSPORTATION  INDEX SHEET	HORIZONTAL SCALE N/A	BRIDGE FILE 02-00113
		DESIGNED: LLS _____	DRAWN: LLB _____	CHECKED: SJM _____		VERTICAL SCALE N/A	DESIGNATION 1902836
						DRAWING NO.	SHEETS
						CONTRACT B-42843	2 of 16 PROJECT 1902836

**LEGEND**

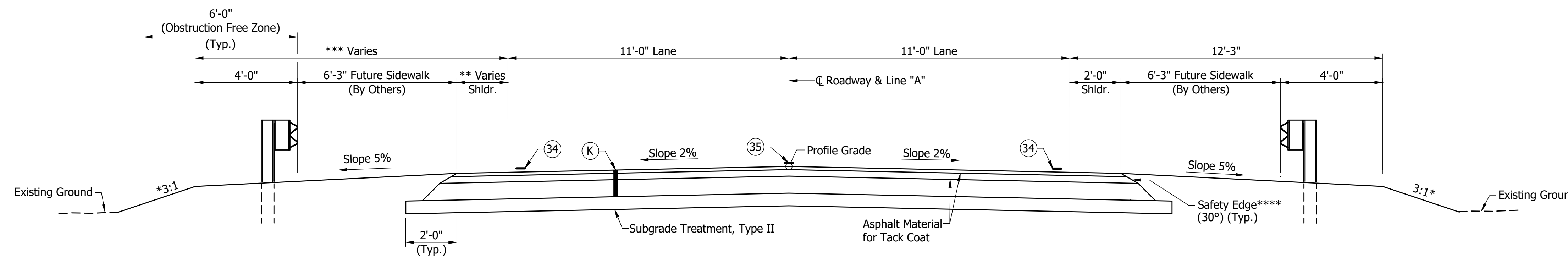
- ③④ Line, Multi-Component, Solid, White, 4 in.
- ③⑤ Line, Multi-Component, Broken, Yellow, 4 in.
- Ⓚ 165#/syd, QC/QA-HMA, 3, 64, Surface, 9.5 mm on 330#/syd, QC/QA-HMA, 3, 64, Intermediate, 19.0 mm on 660#/syd, QC/QA-HMA, 3, 64, Base, 25.0 mm on Subgrade Treatment, Type II

**NOTE TO REVIEWER:** The pavement section shown is based on the anticipated pavement section. The final pavement section will be based on the Final Pavement Design recommendations.



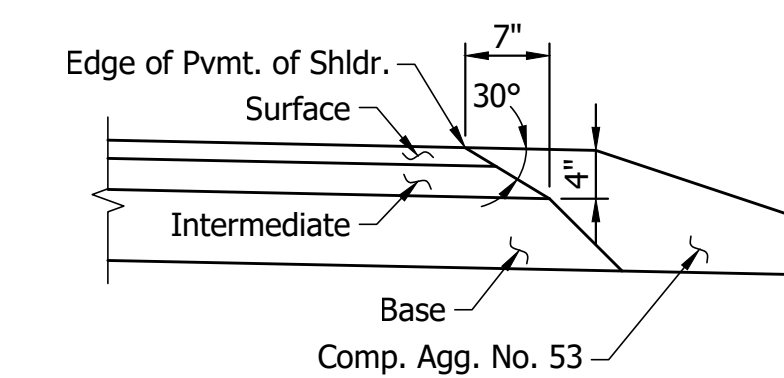
**TYPICAL SECTION**  
 STA. 4+33.23 "A" TO STA. 4+47.23 "A"  
 STA. 5+84.97 "A" TO STA. 5+98.97 "A"  
 Scale: 3/8" = 1'-0"

\* See Cross Sections for Slope  
 \*\*4+33.23 "A" to 4+47.23 "A" varies from 2'-0" to 3'-0"  
 5+84.97 "A" to 5+98.97 "A" = 2'-0"  
 \*\*\*4+33.23 "A" to 4+47.23 "A" varies from 12'-3" to 13'-3"  
 5+84.97 "A" to 5+98.97 "A" = 12'-3"



**TYPICAL SECTION**  
 STA. 3+70.00 "A" TO STA. 4+33.23 "A"  
 STA. 5+98.97 "A" TO STA. 7+00.00 "A"  
 Scale: 3/8" = 1'-0"

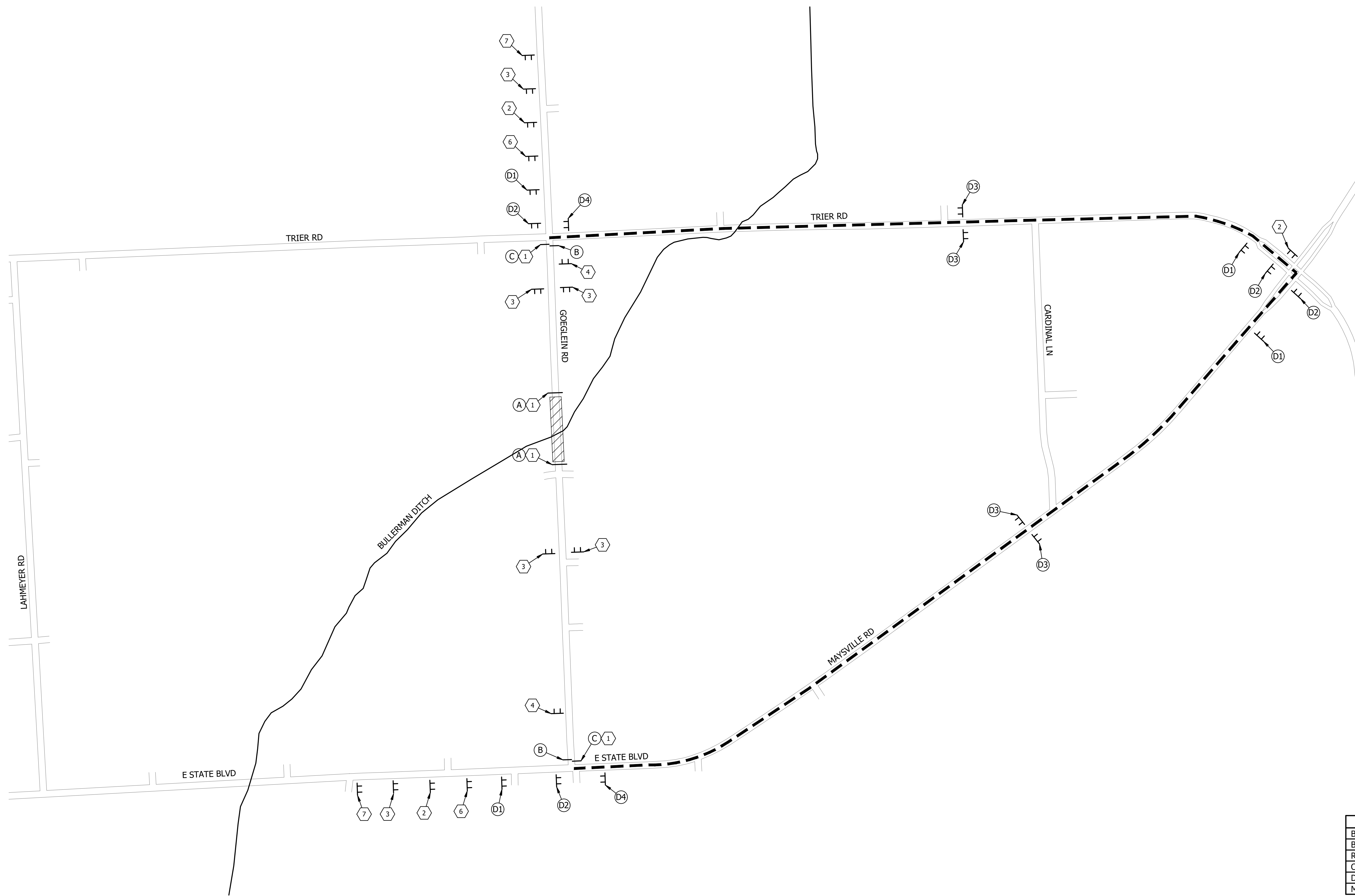
\* See Cross Sections for slope.  
 \*\*3+70.00 "A" to 4+33.23 "A" varies from 3'-0" to 7'-6 3/4"  
 5+98.97 "A" to 7+00.00 "A" = 2'-0"  
 \*\*\*3+70.00 "A" to 4+33.23 "A" varies from 13'-3" to 17'-9 3/4"  
 5+98.97 "A" to 7+00.00 "A" = 12'-3"  
 \*\*\*\*Safety Edge (30°) applicable to Surface and Intermediate Layers only.



**30° SAFETY EDGE**  
 Scale: 3/4" = 1'-0"

Note:  
 The pavement safety edge is not required in locations of curb, guardrail, or barrier rail; however, the Contractor has the option to construct the pavement safety edge within these limits if they choose.

	RECOMMENDED FOR APPROVAL _____	DESIGN ENGINEER _____	DATE _____	<b>INDIANA DEPARTMENT OF TRANSPORTATION</b>	HORIZONTAL SCALE AS NOTED	BRIDGE FILE 02-00113
	DESIGNED: LLS _____	DRAWN: LLB _____			VERTICAL SCALE AS NOTED	DESIGNATION 1902836
	CHECKED: SJM _____	CHECKED: SJM _____		<b>TYPICAL CROSS SECTIONS</b>	DRAWING NO.	SHEETS 3 of 16
					CONTRACT B-42843	PROJECT 1902836



**LEGEND**

- (A) Barricade Type III-A & Road Closure Sign Assembly
- (B) Barricade Type III-B
- (C) Barricade Type III-B & Road Closure Sign Assembly
- (D) XM4-8 Detour Route Marker Assembly
  - 1. Advance Turn
  - 2. Directional
  - 3. Confirming
  - 4. End

**CONSTRUCTION SIGNS TYPE "A"**

- ① R11-2 Road Closed
- ② XW20-2 Detour Ahead
- ③ XW20-3 Road Closed Ahead
- ④ XG20-2 End Construction
- ⑤ R11-4 Road Closed To Thru Traffic
- ⑥ XG20-5 Road Closed on or After xx/xx/xxxx
- ⑦ R11-3 Road Closed xxx Miles Ahead Local Traffic Only

**LEGEND**

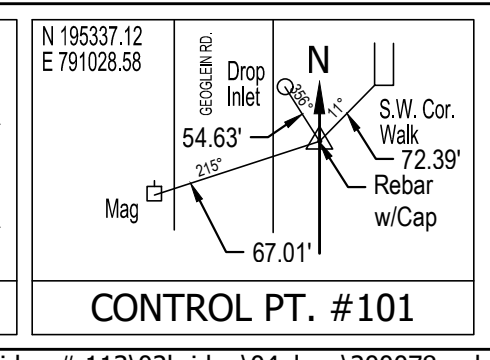
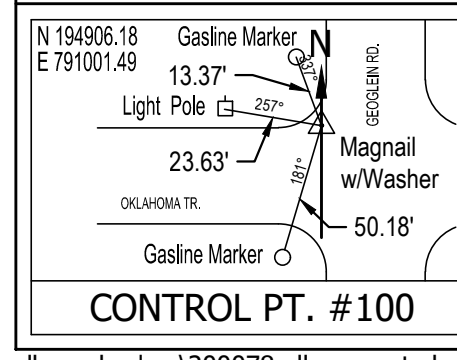
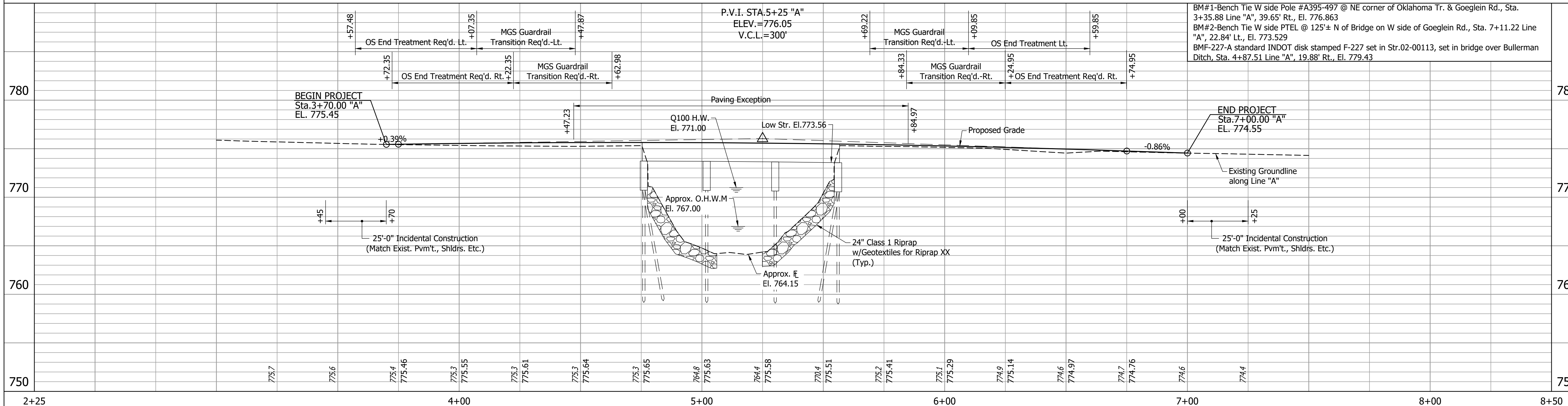
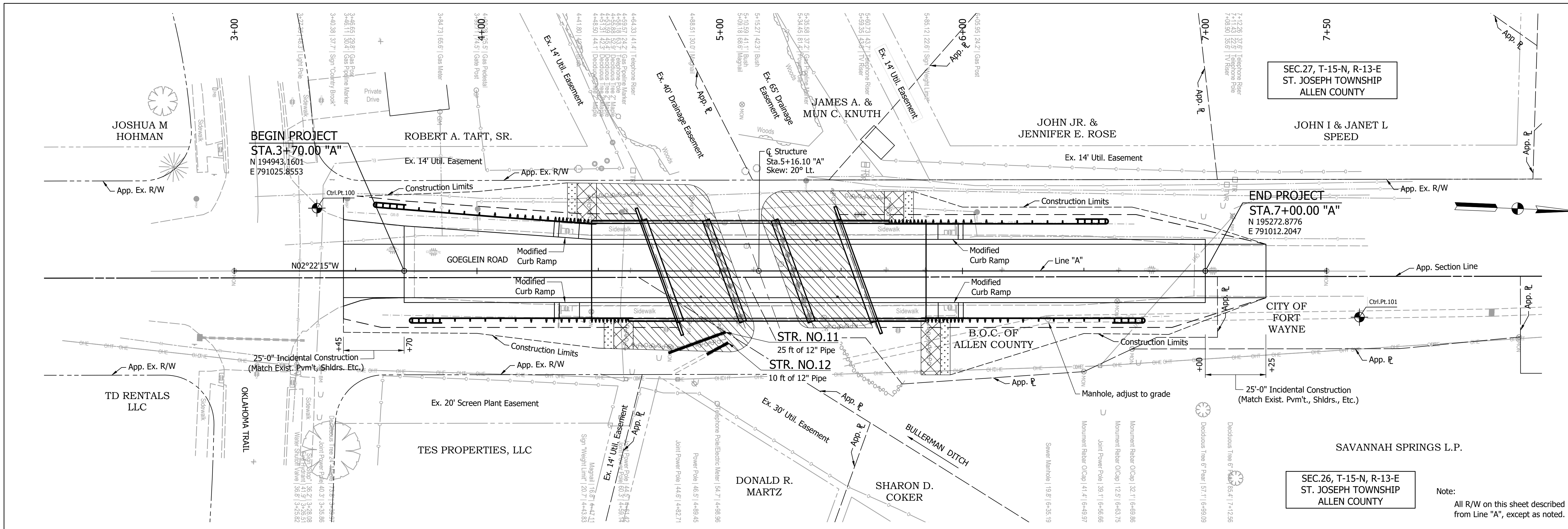
- Construction Area
- Construction Sign and Supports
- Detour Route

**ESTIMATE OF QUANTITIES**

ITEM	QUANTITY
Barricade Type III-A	x Lft.
Barricade Type III-B	x Lft.
Road Closure Sign Assembly	x Ea.
Construction Signs Type "A"	x Ea.
Detour Route Marker Assembly	x Ea.
Maintaining Traffic	1 Lsum

**SIGN PLACEMENT PLAN**  
No Scale

	INDIANA DEPARTMENT OF TRANSPORTATION	HORIZONTAL SCALE NO SCALE	BRIDGE FILE 02-00113
	MAINTENANCE OF TRAFFIC	VERTICAL SCALE NO SCALE	DESIGNATION 1902836
		DRAWING NO.	SHEETS 4 of 16
		CONTRACT B-42843	PROJECT 1902836

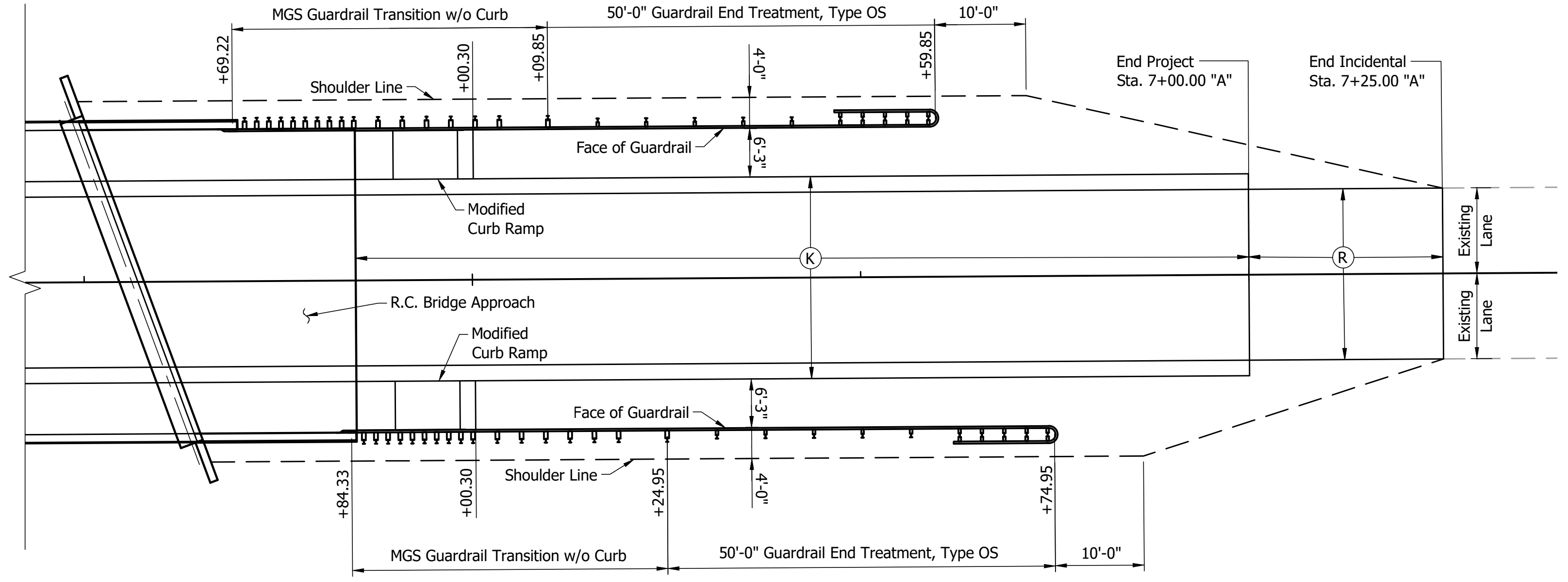
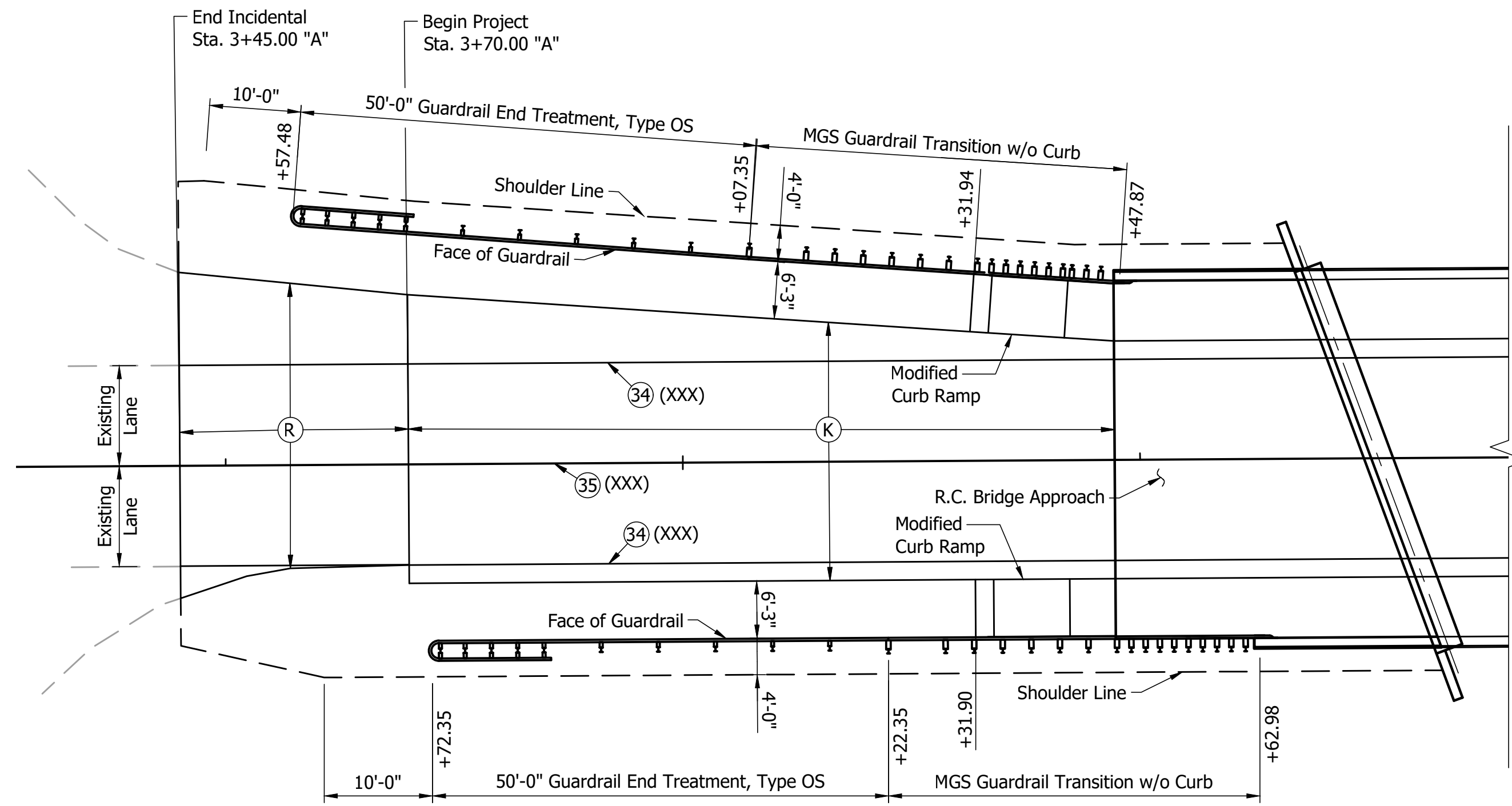
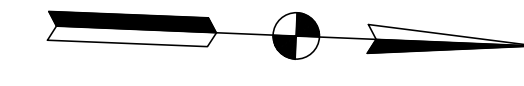


RECOMMENDED FOR APPROVAL	DESIGN ENGINEER	DATE
DESIGNED: LLS	DRAWN: LLB	
CHECKED: SJM	CHECKED: SJM	

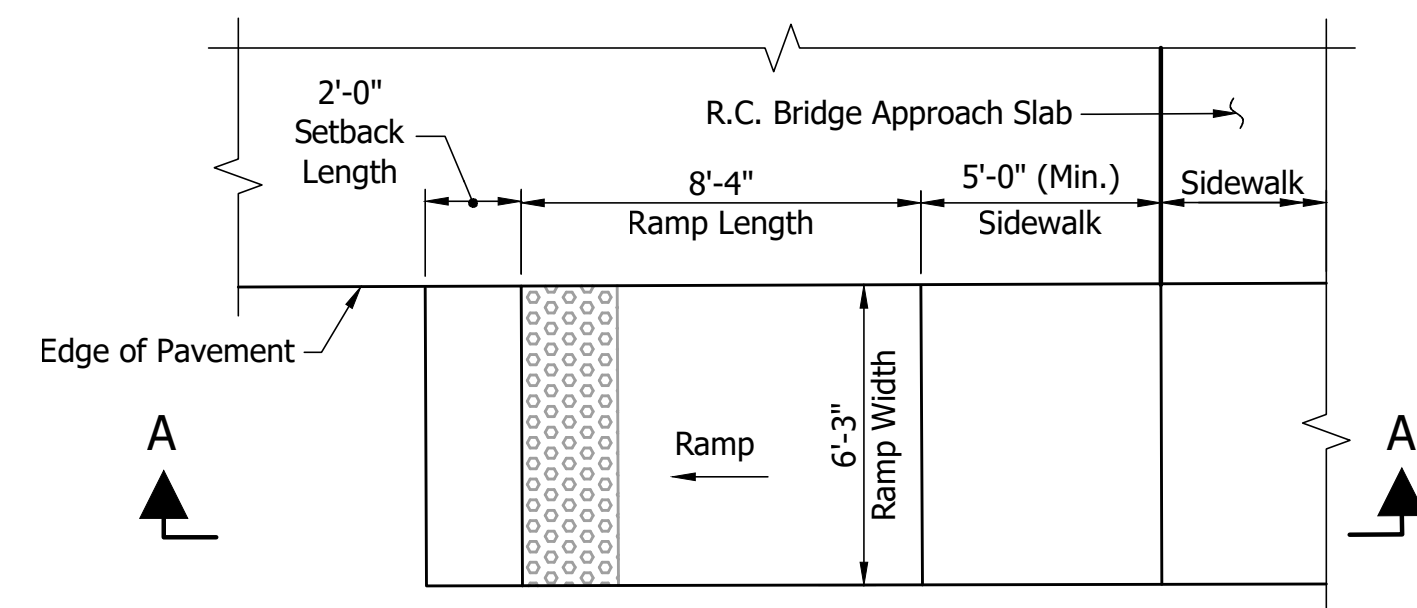
**INDIANA DEPARTMENT OF TRANSPORTATION**

**PLAN AND PROFILE LINE "A"**

HORIZONTAL SCALE 1" = 20'	BRIDGE FILE 02-00113
VERTICAL SCALE 1" = 10'	DESIGNATION 1902836
DRAWING NO.	SHEETS 5 of 16
CONTRACT B-42843	PROJECT 1902836

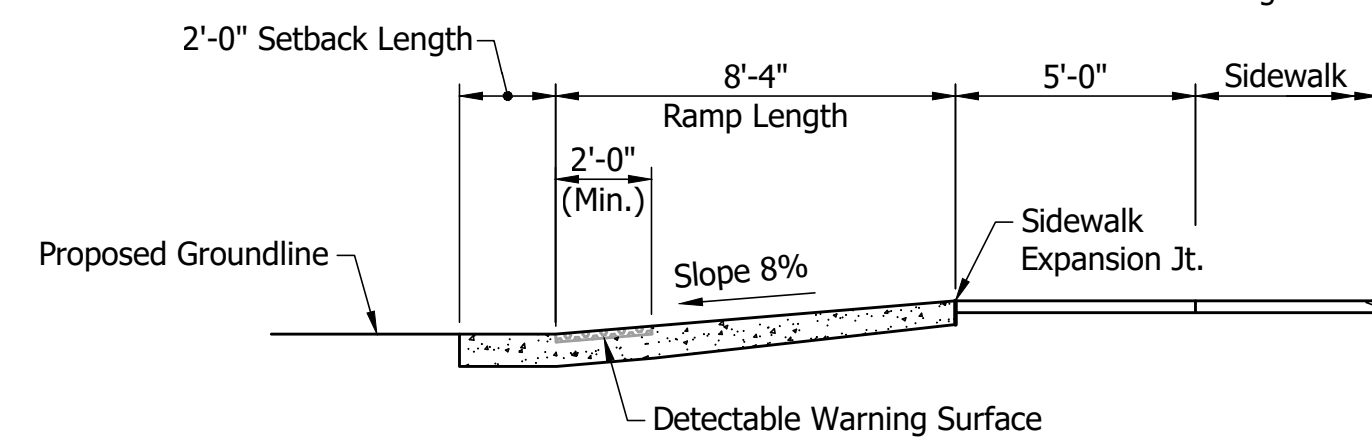


**PLAN**  
Scale 1" = 1'-0"



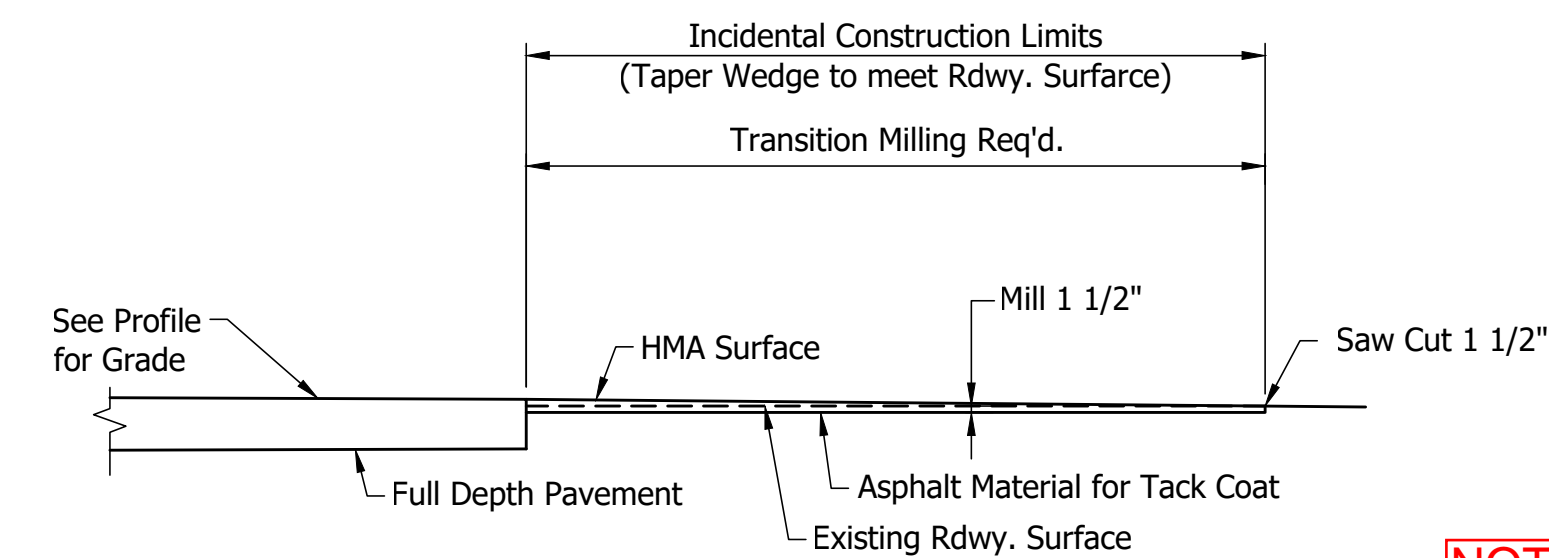
**PLAN VIEW**

Notes:  
For additional Curb Ramp Details, see Std.Dwg.E 604-SWCR.  
For additional Detectable Warning Surface Details, see Std.Dwg.E 604-SWCR-12 - 14.



**SECTION A-A**

**MODIFIED CURB RAMP DETAIL**  
(SE corner shown, other corners similar)  
No Scale



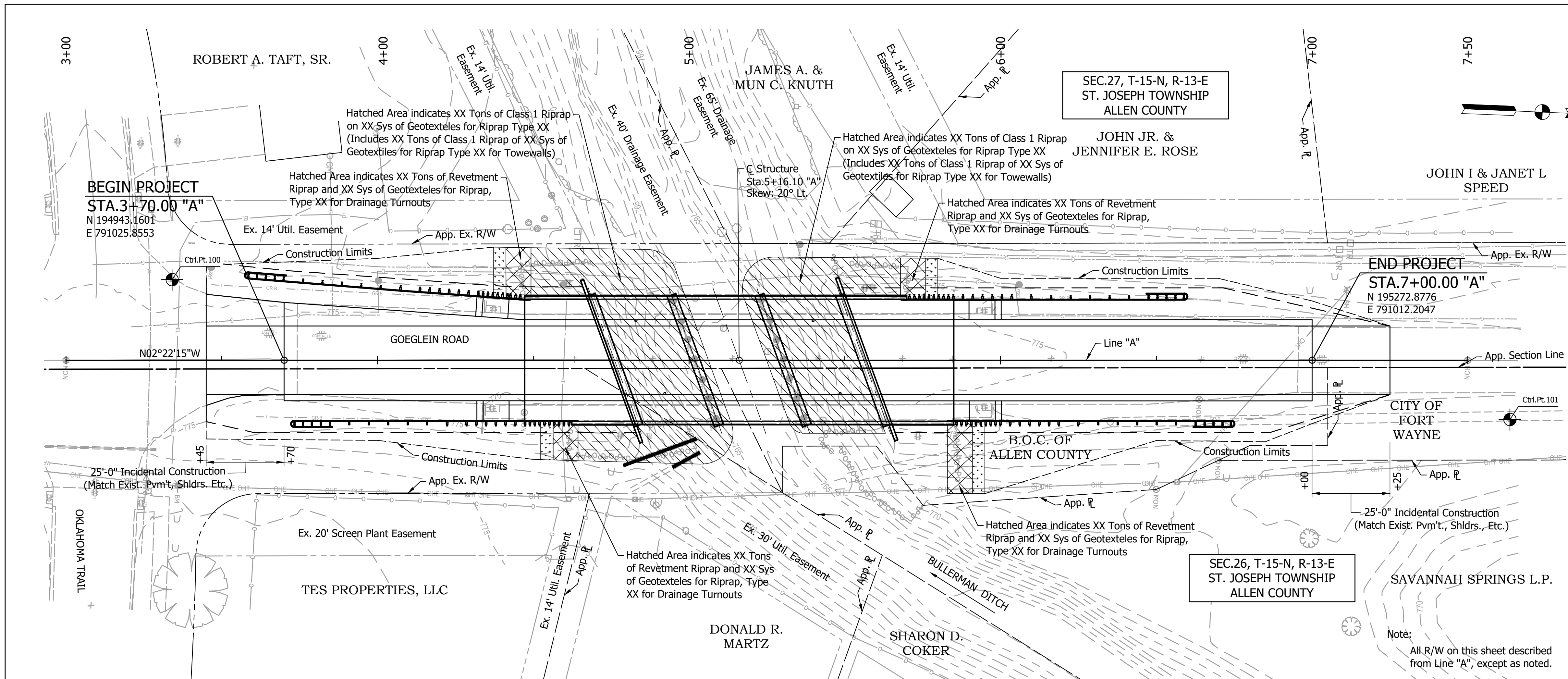
**MATCHING EXISTING PAVEMENT - LINE "A"**  
(REQ'D. @ EACH END OF PROJECT)  
No Scale

**LEGEND**

- (34) Line, Multi-Component, Solid, White, 4 in.
- (35) Line, Multi-Component, Broken, Yellow, 4 in.
- (K) 165#/syd, QC/QA-HMA, 3, 64, Surface, 9.5 mm on 330#/syd, QC/QA-HMA, 3, 64, Intermediate, 19.0 mm on 660#/syd, QC/QA-HMA, 3, 64, Base, 25.0 mm on Subgrade Treatment, Type II
- (R) 165#/syd, QC/QA-HMA, 3, 64, Surface, 9.5 mm

**NOTE TO REVIEWER: The pavement section shown is based on the anticipated pavement section. The final pavement section will be based on the Final Pavement Design recommendations.**

RECOMMENDED FOR APPROVAL _____ DESIGN ENGINEER _____ DATE _____	INDIANA DEPARTMENT OF TRANSPORTATION		HORIZONTAL SCALE	BRIDGE FILE
			1" = 1'-0"	02-00113
DESIGNED: LLS _____ DRAWN: LLB _____	CONSTRUCTION LAYOUT DETAILS		VERTICAL SCALE	DESIGNATION
CHECKED: SJM _____ CHECKED: SJM _____			1" = 1'-0"	1902836
			DRAWING NO.	SHEETS
			CONTRACT	6 of 16
			B-42843	PROJECT
				1902836



**EXISTING STRUCTURE**  
 Existing Structure is a 3 Span Adjacent Prestressed Concrete Box Beam Bridge (25'-10 3/4", 28'-3", 25'-10 3/4") with a 29'-0" Clear Roadway. (To Be Rehabilitated)

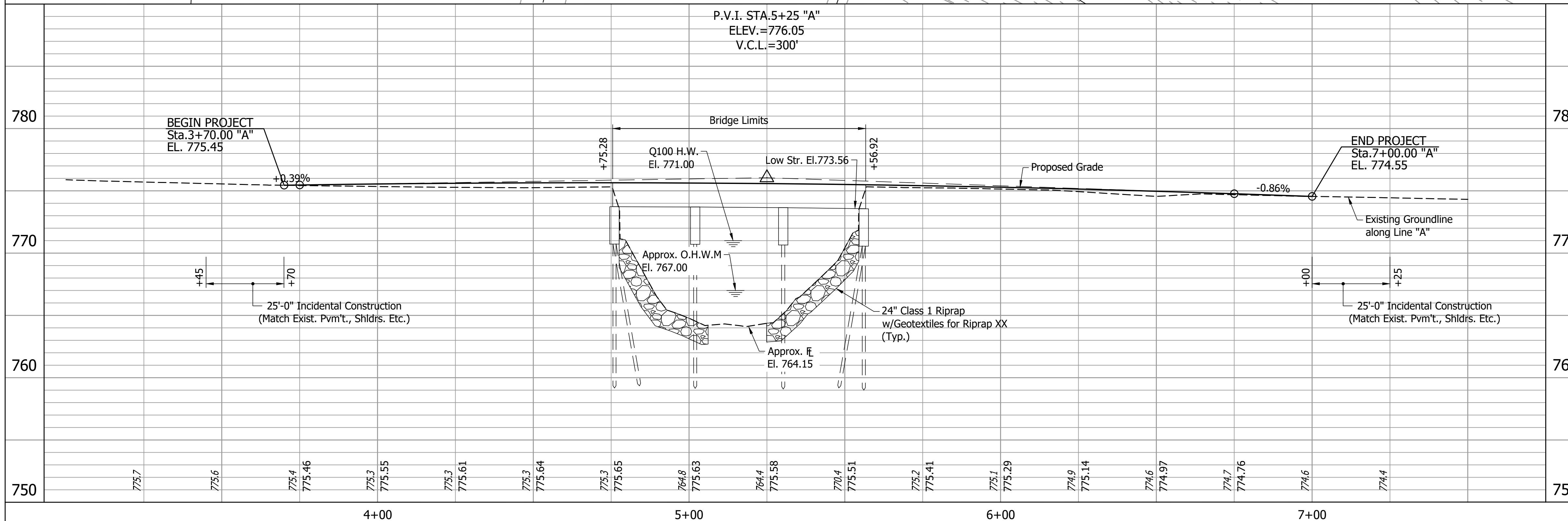
**EARTHWORK SUMMARY\***

Common Excavation	xxx Cys
Usable Common Excavation	xxx Cys
Fill + 20%	xxx Cys
Borrow	xx Cys

\* Quantities shown are to be used as final pay items.  
 The estimated quantities for Benching are xxx Cys for Cut and xxx Cys for Fill and are not included in the Earthwork Summary.

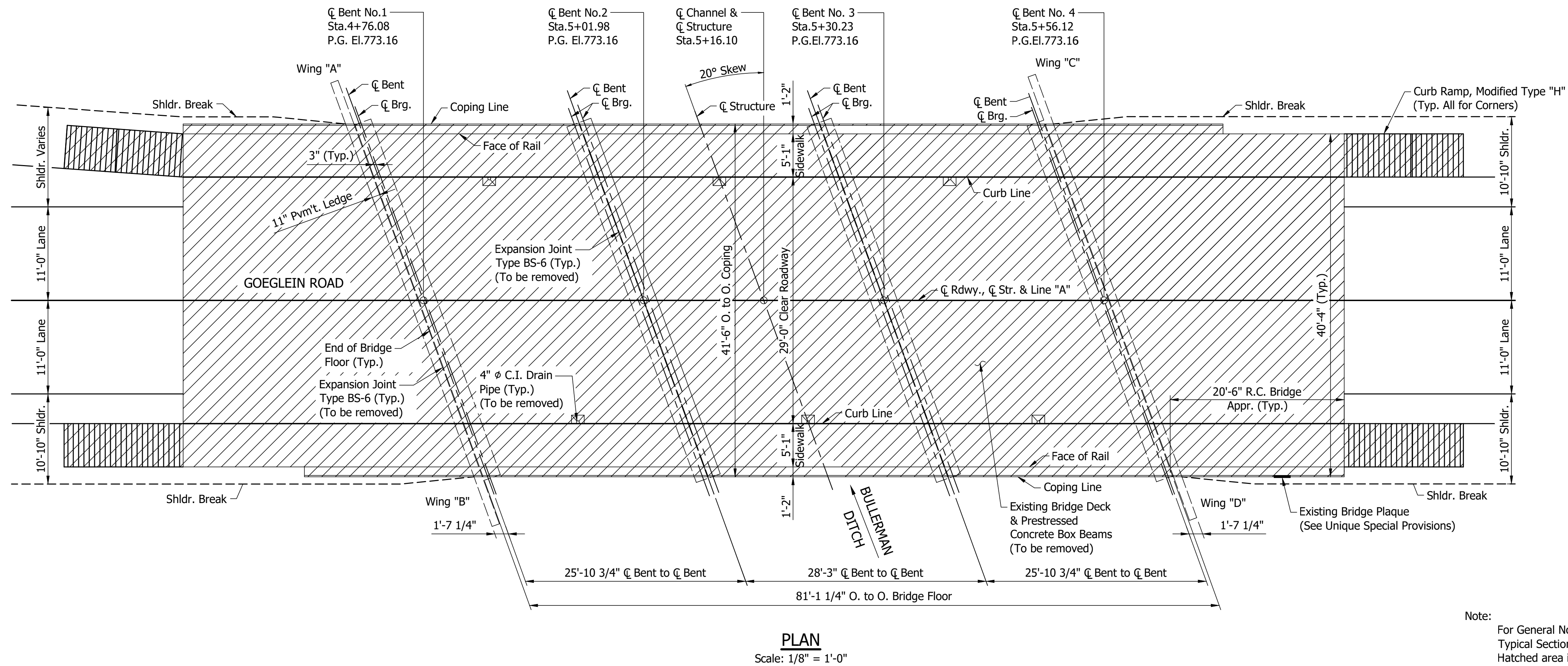
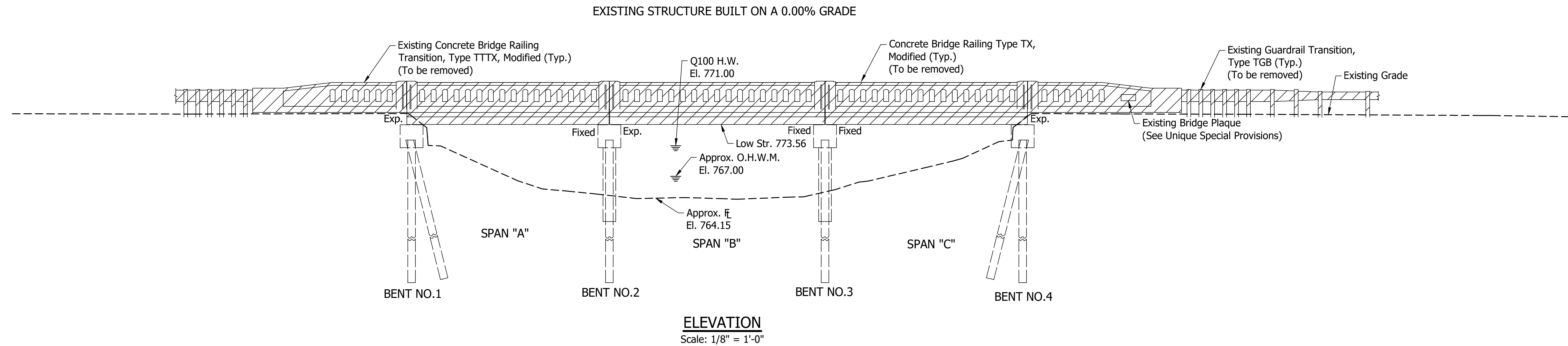
**HYDRAULIC DATA**

Drainage Area	4.05 Sq Mi
Design Discharge, Q100	950 cfs
High Water Elevation, Q100	El. 771.00
Existing Bridge Headwater Elevation, Q100	El. 771.00
Scour Data	
Max. Velocity, Q100	4.58 ft/sec
Concentrated Scour Q100	0.70 ft
Total Scour Q100	5.10 ft
Low Scour Elevation, Q100	El. 759.05
Approx. Low Structure Elevation	El. 773.56
Skew	20° Lt.
Approx. Flowline Elevation	El. 764.15



**CONTINUOUS REINFORCED CONCRETE SLAB BRIDGE**  
 3 SPANS: 25'-10 3/4", 28'-3", 25'-10 3/4"  
 26'-0" CLEAR ROADWAY SKEW: 20° LT.  
 GOGLEIN ROAD OVER BULLERMAN DITCH  
 ALLEN COUNTY

RECOMMENDED FOR APPROVAL _____	DESIGN ENGINEER _____ DATE _____	INDIANA DEPARTMENT OF TRANSPORTATION	HORIZONTAL SCALE	BRIDGE FILE
			1" = 20'	02-00113
DESIGNED: ILS	DRAWN: LLB	LAYOUT LINE "A"	VERTICAL SCALE	DESIGNATION
			1" = 10'	1902836
CHECKED: SJM	CHECKED: SJM		DRAWING NO.	SHEETS
			C1 of C4	7 of 16
			CONTRACT	PROJECT
			B-42843	1902836



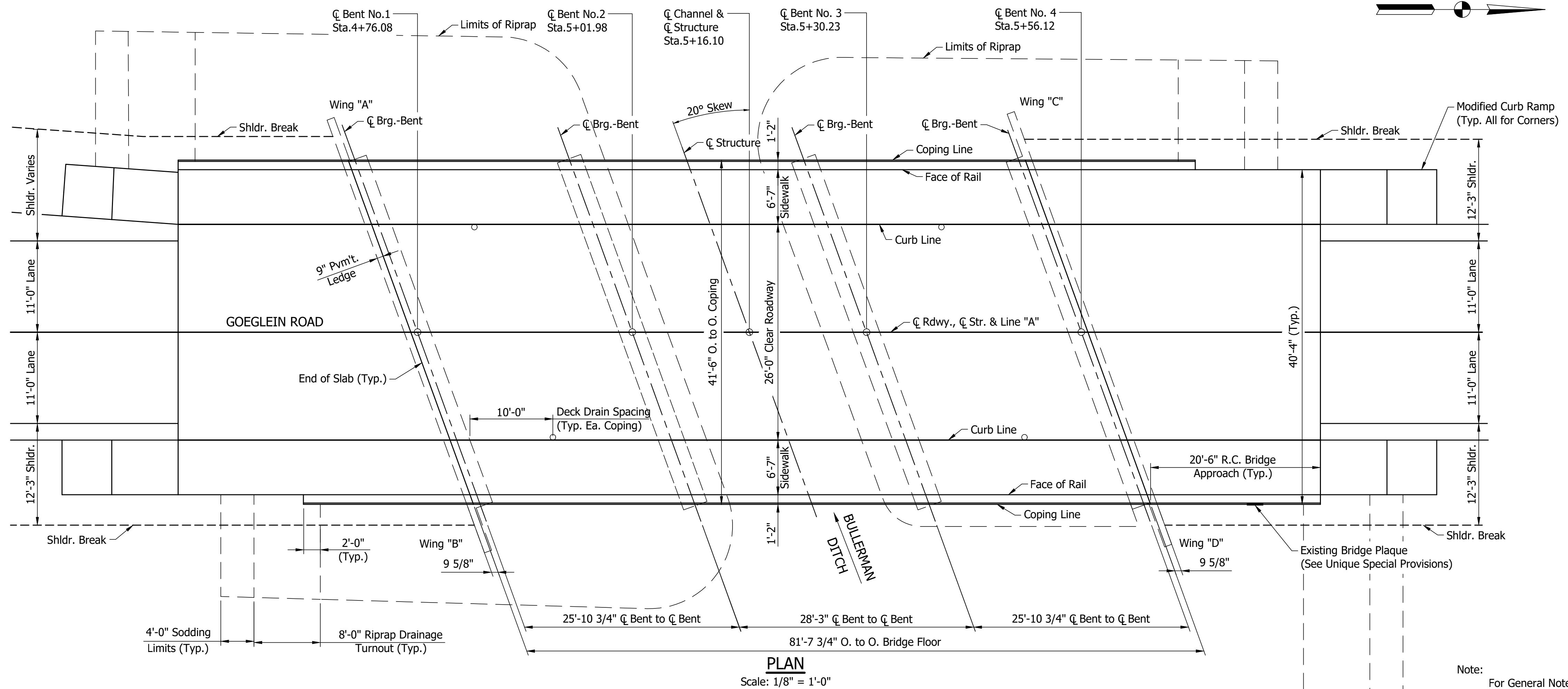
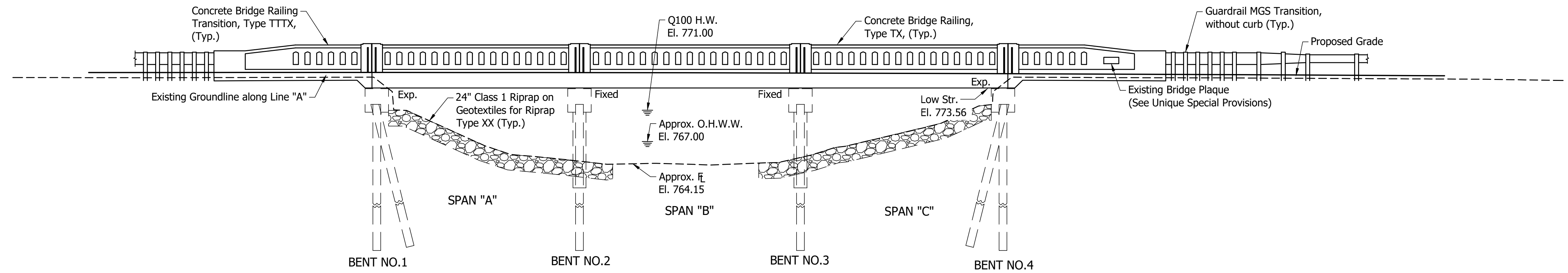
Note:  
For General Notes, Design Data, Construction Procedures, and Typical Sections, see Dwg.C4.  
Hatched area indicates portions to be removed.

**PRESTRESSED CONCRETE BOX BEAM BRIDGE**  
3 SPANS: 25'-10 3/4", 28'-3", 25'-10 3/4"  
29'-0" CLEAR ROADWAY SKEW: 20° LT.  
GOEGLIN ROAD OVER BULLERMAN DITCH  
ALLEN COUNTY

	<b>INDIANA</b> DEPARTMENT OF TRANSPORTATION	HORIZONTAL SCALE 1/8" = 1'-0" VERTICAL SCALE 1/8" = 1'-0"	BRIDGE FILE 02-00113 DESIGNATION 1902836
RECOMMENDED FOR APPROVAL _____ DESIGN ENGINEER _____ DATE _____	<b>GENERAL PLAN</b> EXISTING	DRAWING NO. C2 of C4 CONTRACT B-42843	SHEETS 8 of 16 PROJECT 1902836
DESIGNED: LLS CHECKED: SJM	DRAWN: LLB CHECKED: SJM		



STRUCTURE TO BE BUILT TO A 300' VERTICAL CURVE



Note:  
For General Notes, Design Data, Construction Procedures, and Typical Sections, see Dwg.C4.

CONTINUOUS REINFORCED CONCRETE SLAB BRIDGE  
3 SPANS: 25'-10 3/4", 28'-3", 25'-10 3/4"  
26'-0" CLEAR ROADWAY SKEW: 20° LT.  
GOEGLEIN ROAD OVER BULLERMAN DITCH  
ALLEN COUNTY

RECOMMENDED FOR APPROVAL	DESIGN ENGINEER	DATE
DESIGNED: LLS	DRAWN: LLB	
CHECKED: SJM	CHECKED: SJM	

INDIANA  
DEPARTMENT OF TRANSPORTATION

GENERAL PLAN  
PROPOSED

HORIZONTAL SCALE 1/8" = 1'-0"	BRIDGE FILE 02-00113
VERTICAL SCALE 1/8" = 1'-0"	DESIGNATION 1902836
DRAWING NO. C3 of C4	SHEETS 9 of 16
CONTRACT B-42843	PROJECT 1902836

**GENERAL NOTES**

Chamfer exposed edges 1 inch unless otherwise noted.  
 Reinforcing Steel covering shall be 2 1/2" in top and 1" minimum in the bottom of the floor slab, and 2" in all other parts, unless noted.  
 All exposed faces of the concrete rail to be sealed in accordance with Article 702.21 of the Specifications.  
 (Estimated Quantity = XXXX Sft.)  
 Where new work is to be fitted to old work, the Contractor shall check all dimensions and conditions in the field and report any errors or discrepancies to the Engineer and assume responsibility for their correctness and the fit of the new construction to the existing structure.  
 Construct Class 1 Riprap at locations shown on the Plan and Profile Sheet.  
 Concrete in Slab to be Class "C".

**DESIGN DATA**

**LIVE LOAD**  
 Originally designed for H20-S16-44 loading in accordance with the 1961 AASHTO Standard Specifications.  
 Superstructure designed for HL-93 loading in accordance with the AASHTO LRFD Bridge Design Specifications, Eighth Editions, 2017.

**DEAD LOAD**  
 Designed for actual weight plus 35 psf for future wearing surface

**FLOOR SLAB**  
 Designed for HL-93 Loading with a 1/2" sacrificial wearing surface.

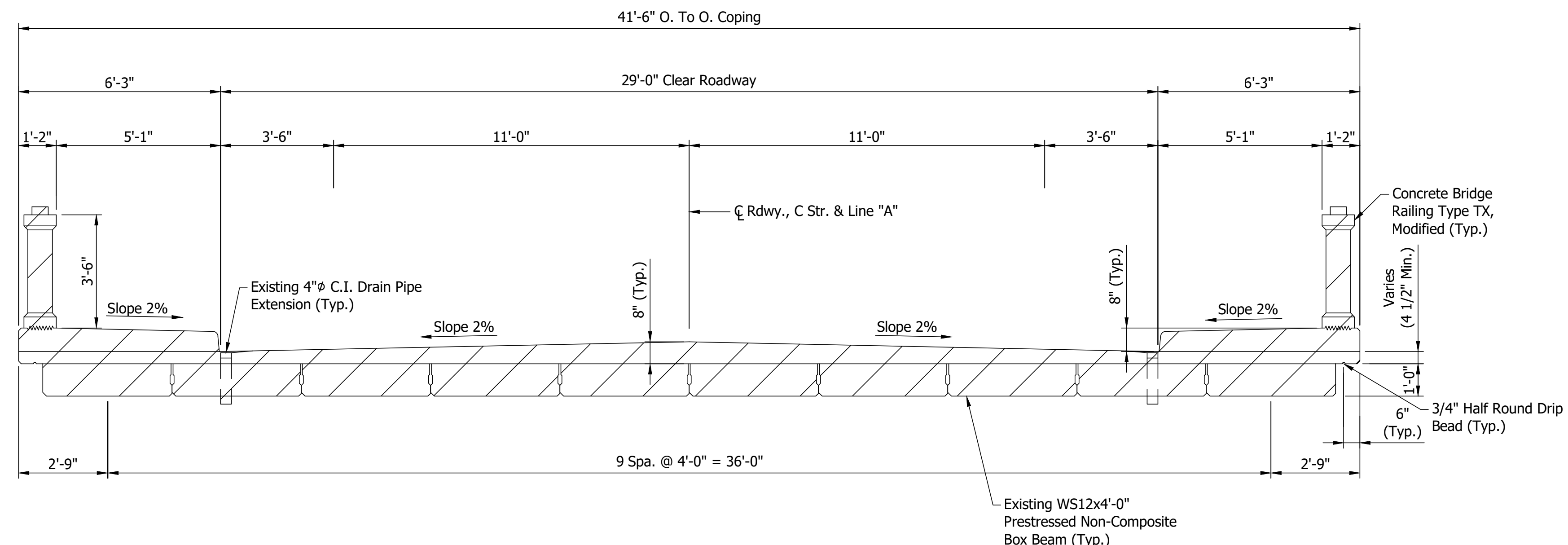
**DESIGN STRENGTHS**  
 To be in accordance with 2017 AASHTO LRFD Bridge Design Specifications.

**CONCRETE:**  
 Class "C": f'c=4,000 psi

**REINFORCING STEEL:**  
 Grade 60: fy=60,000 psi

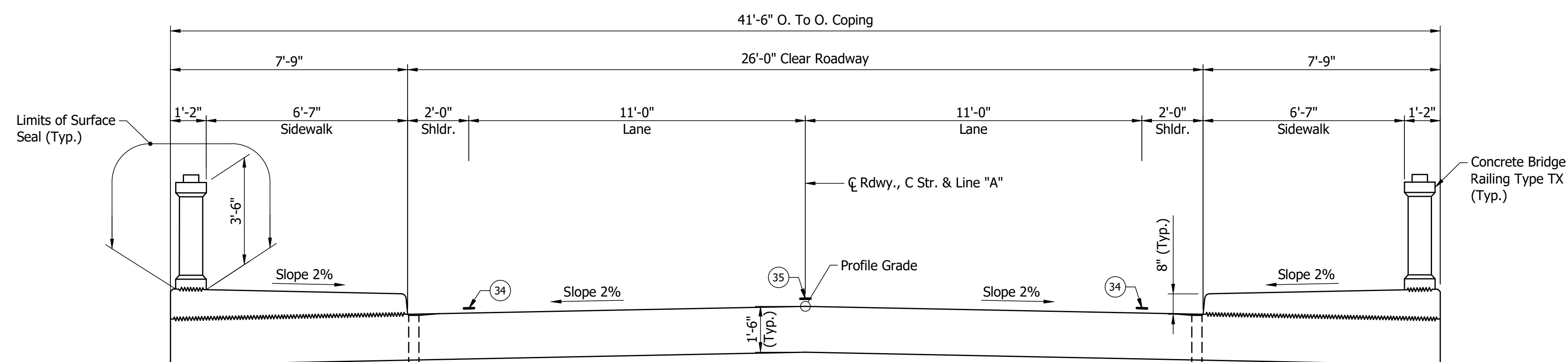
**CONSTRUCTION PROCEDURE**

1. Remove box beams, concrete slab, sidewalks and bridge rail.
2. Place Riprap on existing spill slopes in Spans "A" and "C".
3. Construct new continuous reinforced concrete slab.
4. Construct new reinforced concrete bridge approach slabs and approaches.
5. Install new sidewalks and modified curb ramps.
6. Install new bridge rail and approach guardrail.



**TYPICAL SECTION - EXISTING**

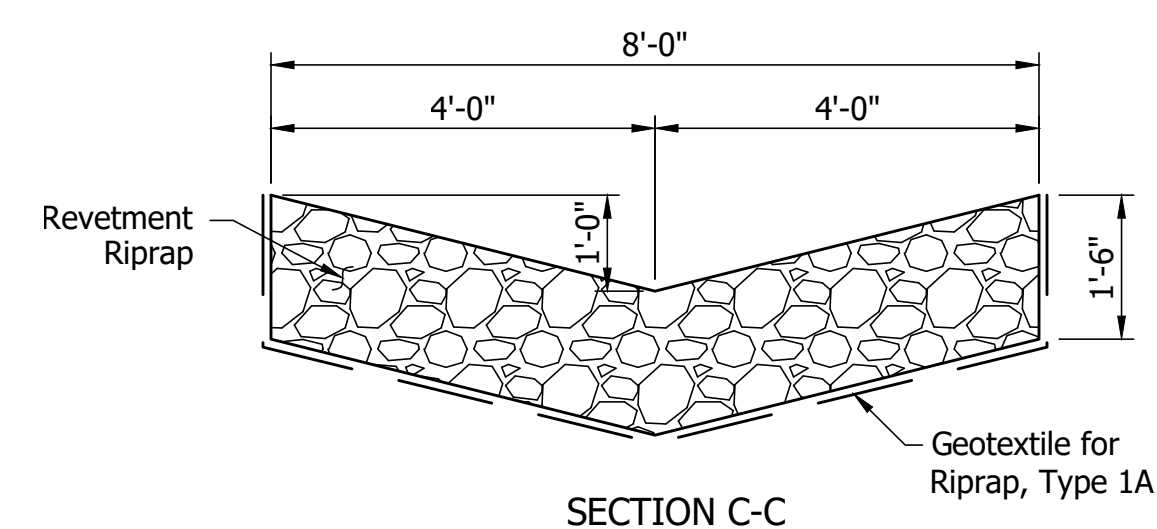
Scale: 3/8"=1'-0"



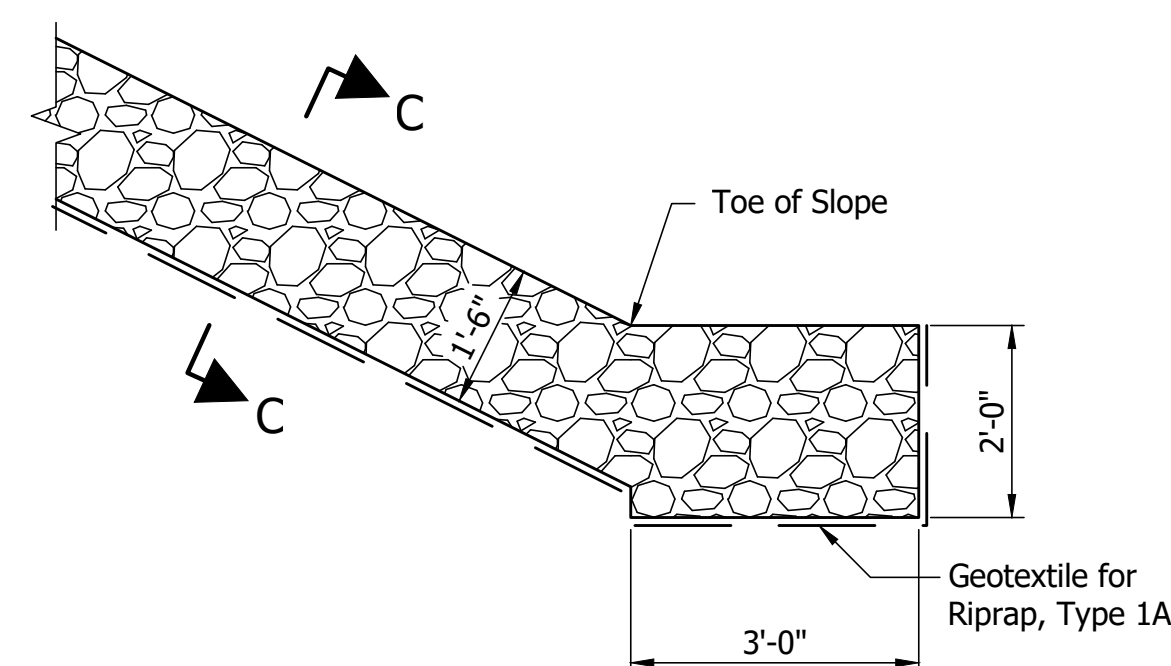
**TYPICAL SECTION - PROPOSED**

Scale: 3/8"=1'-0"

- LEGEND**
- (34) Line, Multi-component, Solid, White, 4 in.
  - (35) Line, Multi-component, Broken, Yellow, 4 in.



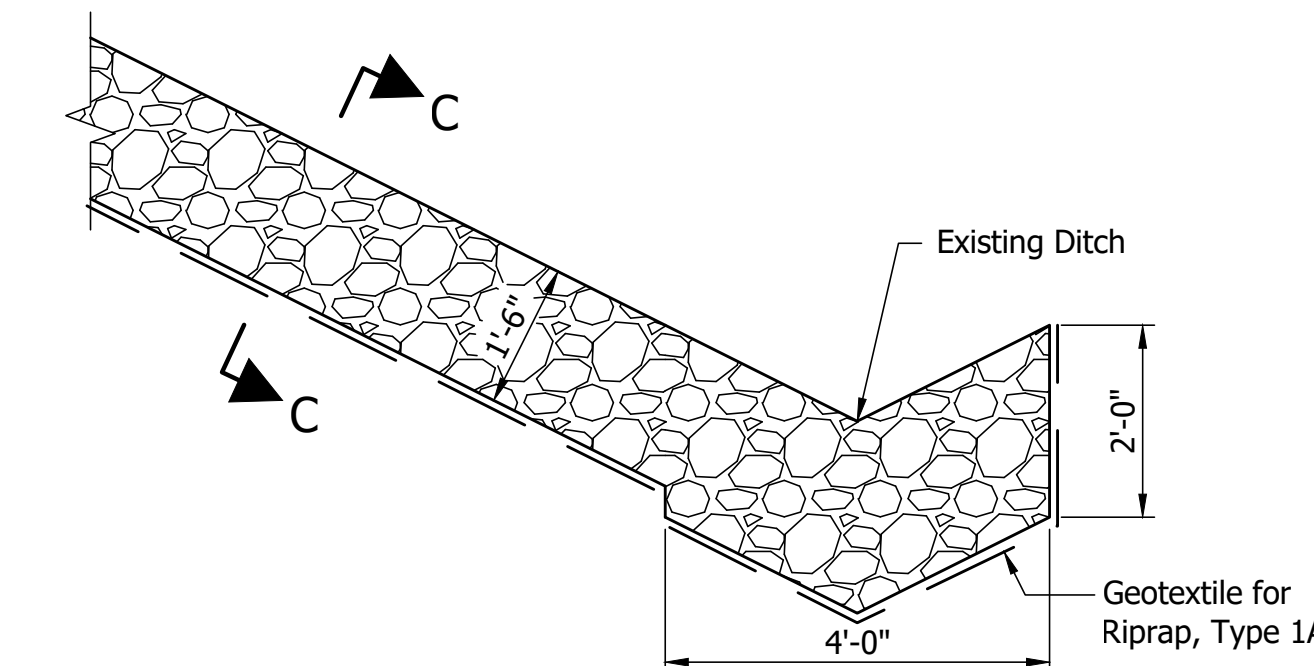
**SECTION C-C**



**LONGITUDINAL SECTION**

**RIPRAP DRAINAGE TURNOUT DETAIL**

For Southwest Quadrant  
 Scale: 1/2"=1'-0"



**LONGITUDINAL SECTION**

**RIPRAP DRAINAGE TURNOUT DETAIL**

For Northwest, Northeast and Southwest Quadrants  
 Scale: 1/2"=1'-0"

Notes:  
 Hatched area indicates portion to be removed.  
 For Existing Plan and Elevations, see Dwg.C2.  
 For Proposed Plan and Elevations, see Dwg.C3.

**CONTINUOUS REINFORCED CONCRETE SLAB BRIDGE**  
 3 SPANS: 25'-10 3/4", 28'-3", 25'-10 3/4"  
 26'-0" CLEAR ROADWAY SKEW: 20° LT.  
 GOEGLIN ROAD OVER BULLERMAN DITCH  
 ALLEN COUNTY

RECOMMENDED FOR APPROVAL _____ DESIGN ENGINEER _____ DATE _____ DESIGNED: LLS _____ DRAWN: LLB _____ CHECKED: SJM _____ CHECKED: SJM _____	INDIANA DEPARTMENT OF TRANSPORTATION  GENERAL PLAN TYPICAL SECTIONS	HORIZONTAL SCALE 3/8" = 1'-0"	BRIDGE FILE 02-00113
		VERTICAL SCALE 3/8" = 1'-0"	DESIGNATION 1902836
		DRAWING NO. C4 of C4	SHEETS 10 of 16
		CONTRACT B-42843	PROJECT 1902836

**SUMMARY OF BRIDGE QUANTITIES**

ITEM	CONCRETE				RAILING, CONCRETE, MODIFIED, TYPE TX	CONC. BRIDGE RAILING TRANSITION, MODIFIED, TYPE TTTX	REINF. CONC. BRIDGE APPROACH (12")	THREADED TIE BAR ASSEMBLY, EPOXY COATED	REINF. STEEL, EPOXY COATED	REINF. STEEL	GRATES, BASINS, & FITTINGS	GEOTEXTILES	DENSE GRADED SUBBASE	DRILLED HOLE	EXPANSION JOINT, TYPE BS	AGGREGATE FOR END BENT BACKFILL	RIPRAP, CLASS 1	BRIDGE DECK PATCHING, FULL DEPTH	PATCHING CONCRETE STRUCTURES	WET EXCAVATION	DRY EXCAVATION	FOUNDATION EXCAVATION, UNCLASSIFIED	SURFACE SEAL*
	CLASS C	CLASS B		CLASS A																			
	SUPERSTR.	ABOVE FTG.	IN FTG.	SUBSTR.																			
	CYS	CYS	CYS	CYS																			
				LFT	EACH	SYS	EACH	LBS	LBS	EACH	SYS	CYS	EACH	LFT	CYS	TON	SFT	SFT	CYS	CYS	CYS	SFT	
BENT NO.1																							
BENT NO.2																							
BENT NO.3																							
BENT NO.4																							
SUPERSTRUCTURE																							
R.C. BRIDGE APPROACH - BENT NO.1																							
R.C. BRIDGE APPROACH - BENT NO.4																							
TOTALS																							

REVISIONS	
DATE	ITEM

		RECOMMENDED FOR APPROVAL _____ DESIGN ENGINEER DATE	<b>INDIANA DEPARTMENT OF TRANSPORTATION</b>	HORIZONTAL SCALE N/A	BRIDGE FILE 02-00113	
				VERTICAL SCALE N/A	DESIGNATION 1902836	
			DESIGNED: LLS _____ DRAWN: LLB _____	<b>BRIDGE SUMMARY OF QUANTITIES</b>	DRAWING NO.	SHEETS 11 of 16
			CHECKED: SJM _____ CHECKED: SJM _____		CONTRACT B-42843	PROJECT 1902836

PAVEMENT QUANTITIES AND APPROACH TABLE

LOCATION	DESCRIPTION (APPROACH TYPE OR CLASS)	WIDTH FT	LENGTH FT	RADIUS FT	DISTANCE BEYOND R/W LINE FT	SURFACE BEYOND R/W LINE			GRADE 1 % 2 %	EXCAVATION CUT CYS FILL CYS	HMA FOR APPROACHES			QA/QC HMA FOR ROADS										ASPHALT MATERIAL FOR TACK COAT SYS	JOINT ADHESIVE SURFACE LFT	JOINT ADHESIVE INTERMEDIATE LFT	LIQUID ASPHALT SEALANT LFT	COMPACTED AGGREGATE FOR BASE NO. 53		COMPACTED AGGREGATE NO.53 SHOULDERS		MILLING TRANSITION SYS	SUBGRADE TREATMENT TYPE IA SYS	CURB, CONCRETE, TYPE B LFT	CONCRETE SIDEWALK, 4" SYS	CURB & GUTTER CONCRETE LFT	REMARKS
						COMPACTED AGGREGATE BASE	HMA	PCCP			SURFACE 2.64	SURFACE 9.5MM	SURFACE 2.70	INTERMID 9.5MM	INTERMID 2.64	INTERMID 19.0MM	5.76	19.0MM	BASE 4.64	25.0MM	BASE 5.64	25.0MM	DEPTH 6"					DEPTH 5"	DEPTH 16.75"	DEPTH 6"							
						SYS	SYS	SYS			TONS	TONS	TONS	TONS	TONS	TONS	TONS	TONS	TONS	TONS	TONS	TONS	CYS					CYS	TONS	TONS							
						LBS PER SYD	LBS PER SYD	LBS PER SYD			LBS PER SYD	LBS PER SYD	LBS PER SYD	LBS PER SYD	LBS PER SYD	LBS PER SYD	LBS PER SYD	LBS PER SYD	LBS PER SYD	LBS PER SYD	LBS PER SYD	LBS PER SYD	LBS PER SYD					LBS PER SYD	LBS PER SYD	LBS PER SYD							
TOTALS																																					

STRUCTURE DATA TABLE

STRUCTURE NUMBER	LOCATION				PIPE TYPE	MANHOLE, INLET, CATCH BASIN, OR SPECIALTY STRUCTURE AND TYPE	LENGTH LFT	SKEW FT	FLOW LINE			SERVICE LIFE YR	SITE DESIGNATION	pH	BACKFILL METHOD	STRUCTURE BACKFILL TYPE	REVEMENT RIPRAP CYS	CONCRETE, CLASS A, FOR STRUCTURES CYS	GEOTEXTILES FOR RIPRAP, TYPE IA SYS	PIPE END SECTION EA	GRATED BOX END SECTION			SAFETY METAL END SECTION			CONNECT TO STR.	REMARKS
	STATION	LEFT	CROSS	RIGHT					UP	DOWN	TYPE										SLOPE	EA.	TYPE	SLOPE	EA.			
	IN.	IN.	IN.	IN.					ELEV.	ELEV.	EA.										EA.	EA.	EA.	EA.	EA.			
TOTALS																												

R/W MARKER TABLE

LT./RT.	STATION	OFFSET (ft)	NO. REQ'D.	FLUSH MOUNT
TOTALS				

MAILBOX APPROACHES

LT./RT.	C/L BOX STATION	DESCRIPTION	WIDTH, W (FT)	ASSEMBLY REQ'D		
				SINGLE	DOUBLE	TRIPLE
TOTAL						

MONUMENT TABLE

LOCATION	OFFSET	TYPE	SECTION CORNER
TOTAL			

PERMANENT EROSION CONTROL SUMMARY TABLE

LOCATION		LEFT MEDIAN RIGHT	ACTUAL LENGTH LFT	PAVEMENT SIDE DITCH					RIPRAP DITCH			SODDING					NURSERY SODDING FOR LAWNS SYS		
FROM STATION	TO STATION			CUT OFF WALLS (8 FT EQUIV. LENGTH EACH) EACH	TOTAL EQUIVALENT PAY LENGTHS					RIPRAP REVEMENT TONS	RIPRAP, UNIFORM TONS	GEOTEXTILES FOR RIPRAP TYPE IA SYS	FOR PAVED SIDE DITCHES SYS	FOR DITCHES SYS	FOR MEDIAN SYS	FOR SHOULDER BREAK SYS		SODDING AT BRIDGE CONE SYS	TOTAL SODDING SYS
					TYPE														
					LFT	LFT	LFT	LFT	LFT										
TOTALS																			

GUARDRAIL SUMMARY TABLE

LOCATION		LEFT MEDIAN RIGHT	MGS W-BEAM GUARDRAIL LENGTH						GUARDRAIL FLARE RATE	MGS GUARDRAIL TRANSITION WITH CURB EACH	MGS GUARDRAIL TRANSITION WITHOUT CURB EACH	MGS CABLE TERMINAL ANCHOR EACH	GUARDRAIL END TREATMENT TYPE OS EACH	CURVED W-BEAM GUARDRAIL SYSTEM				REMARKS			
FROM STATION	TO STATION		STANDARD POST AT 6 FT. 3 IN. SPA.	STANDARD POST AT 3 FT. 1.5 IN. SPA.	DOUBLE FACED AT 6 FT. 3 IN. SPA.	DOUBLE FACED AT 3 FT. 1.5 IN. SPA.	SHOP CURVED AT _____ FT. SPA.	MGS GUARDRAIL LONG SPAN, TYPE 1						MGS GUARDRAIL LONG SPAN, TYPE 2	TERMINAL SYSTEM TYPE	CONNECTOR SYSTEM EACH	GUARDRAIL REMOVE LFT		GUARDRAIL RESET LFT	IMPACT ATTENUATOR TYPE _____ EACH	IMPACT ATTENUATOR TYPE _____ EACH
			LFT	LFT	LFT	LFT	LFT	EACH						EACH							
TOTALS																					

REVISIONS

DATE	ITEM

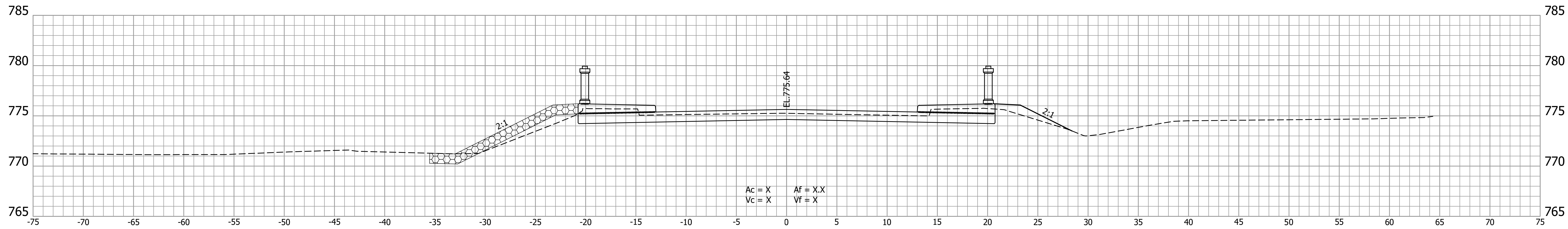
RECOMMENDED FOR APPROVAL _____	DESIGN ENGINEER _____	DATE _____
DESIGNED: LLS _____	DRAWN: LLB _____	
CHECKED: SJM _____	CHECKED: SJM _____	

INDIANA  
DEPARTMENT OF TRANSPORTATION

ROAD SUMMARY OF QUANTITIES

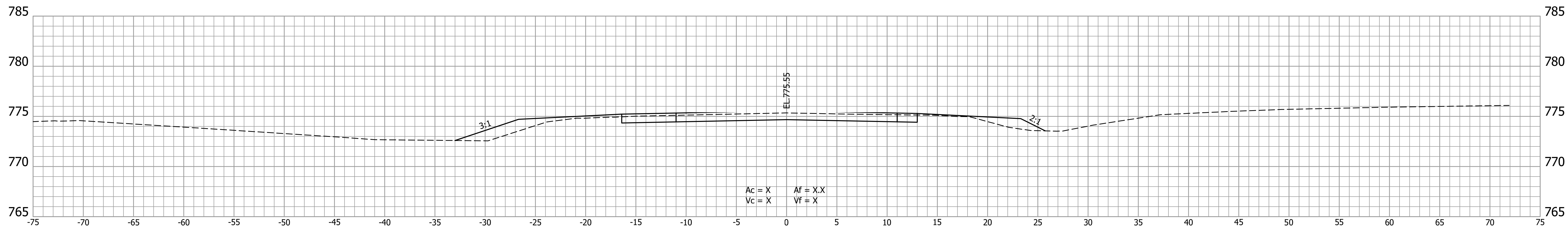
HORIZONTAL SCALE N/A	BRIDGE FILE 02-00113
VERTICAL SCALE N/A	DESIGNATION 1902836
DRAWING NO.	SHEETS 12 of 16
CONTRACT B-42843	PROJECT 1902836





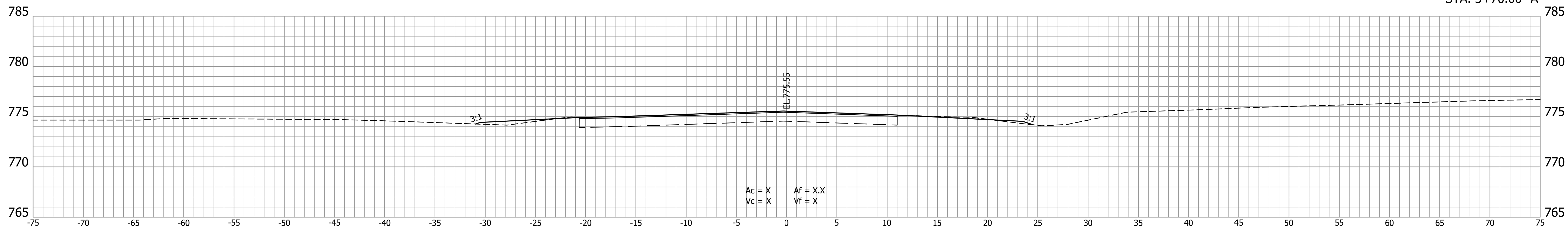
4  
+

4  
+



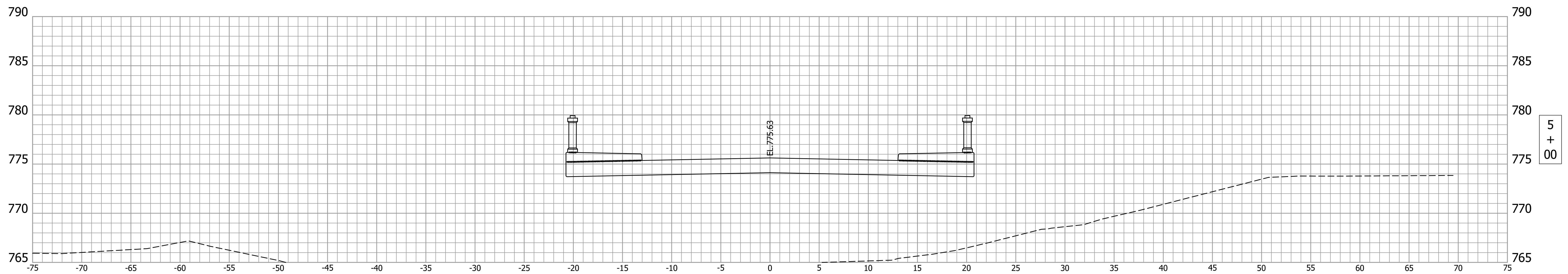
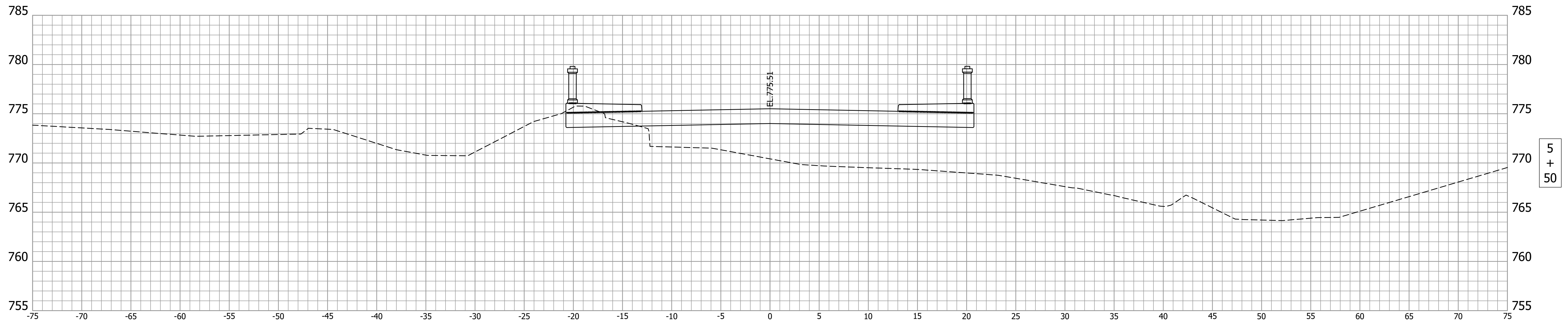
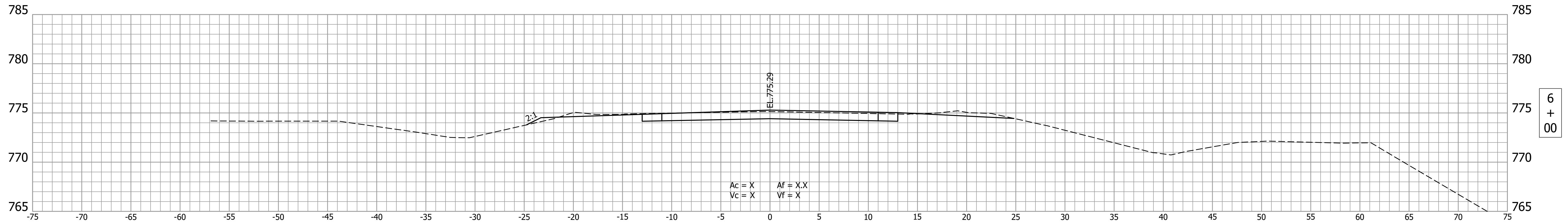
BEGIN PROJECT  
STA. 3+70.00 "A"

3  
+

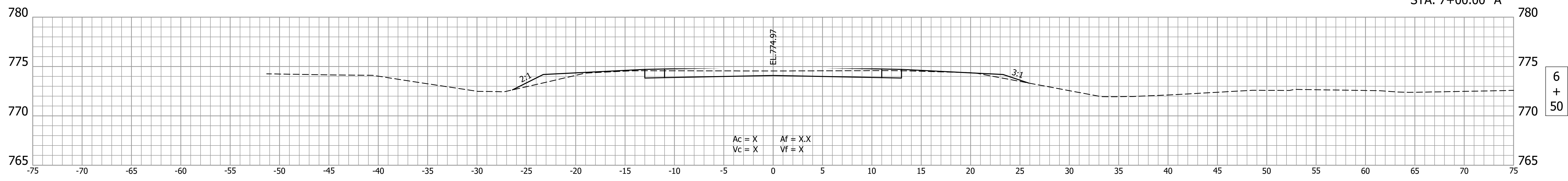
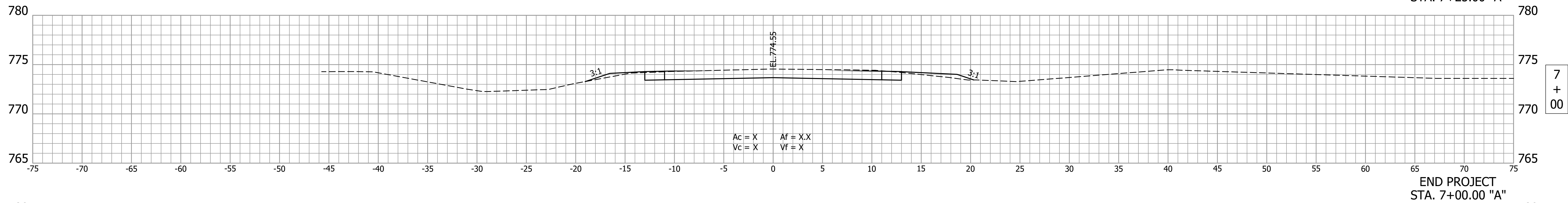
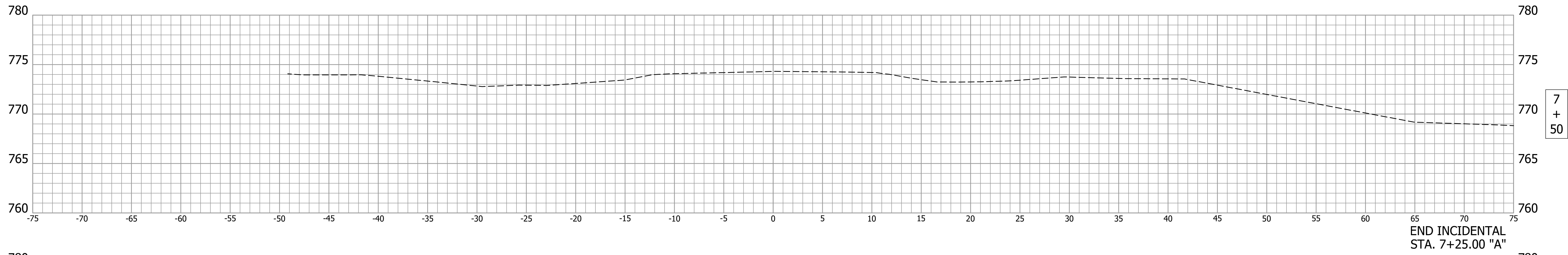


BEGIN INCIDENTAL  
STA. 3+45.00 "A"

	RECOMMENDED FOR APPROVAL _____	DESIGN ENGINEER _____	DATE _____	INDIANA DEPARTMENT OF TRANSPORTATION	HORIZONTAL SCALE 1" = 5'	BRIDGE FILE 02-00113
	DESIGNED: LLS _____	DRAWN: LLB _____			VERTICAL SCALE 1" = 5'	DESIGNATION 1902836
	CHECKED: SJM _____	CHECKED: SJM _____		CROSS SECTIONS LINE "A"	DRAWING NO.	SHEETS 14 of 16
					CONTRACT B-42843	PROJECT 1902836



	RECOMMENDED FOR APPROVAL _____ DESIGN ENGINEER _____ DATE _____	INDIANA DEPARTMENT OF TRANSPORTATION		HORIZONTAL SCALE 1" = 5'	BRIDGE FILE 02-00113	
				VERTICAL SCALE 1" = 5'	DESIGNATION 1902836	
		DESIGNED: LLS _____ DRAWN: LLB _____	CROSS SECTIONS LINE "A"		DRAWING NO.	SHEETS 15 of 16
		CHECKED: SJM _____ CHECKED: SJM _____			CONTRACT B-42843	PROJECT 1902836



		RECOMMENDED FOR APPROVAL _____	DESIGN ENGINEER _____	DATE _____	INDIANA DEPARTMENT OF TRANSPORTATION	HORIZONTAL SCALE 1" = 5'	BRIDGE FILE 02-00113
		DESIGNED: LLS _____	DRAWN: LLB _____			VERTICAL SCALE 1" = 5'	DESIGNATION 1902836
		CHECKED: SJM _____	CHECKED: SJM _____			DRAWING NO.	SHEETS 16 of 16
						CONTRACT B-42843	PROJECT 1902836
<b>CROSS SECTIONS LINE "A"</b>							