

City of Fort Wayne Public Meeting

February 9, 2022



FW PUBLIC WORKS

**City
Engineering**

In Your Neighborhood

Bluffton Road Bridge Over the St. Marys River Bridge Rehabilitation



FORT WAYNE

Public Works

In Your Neighborhood

Bluffton Road Bridge Rehabilitation



FW PUBLIC WORKS

**City
Engineering**

In Your Neighborhood

1. Purpose & Need
2. Overview of Project
3. Maintenance of Traffic
4. Tentative Project Timeline

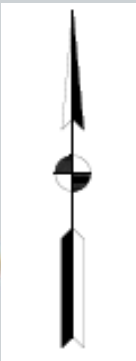
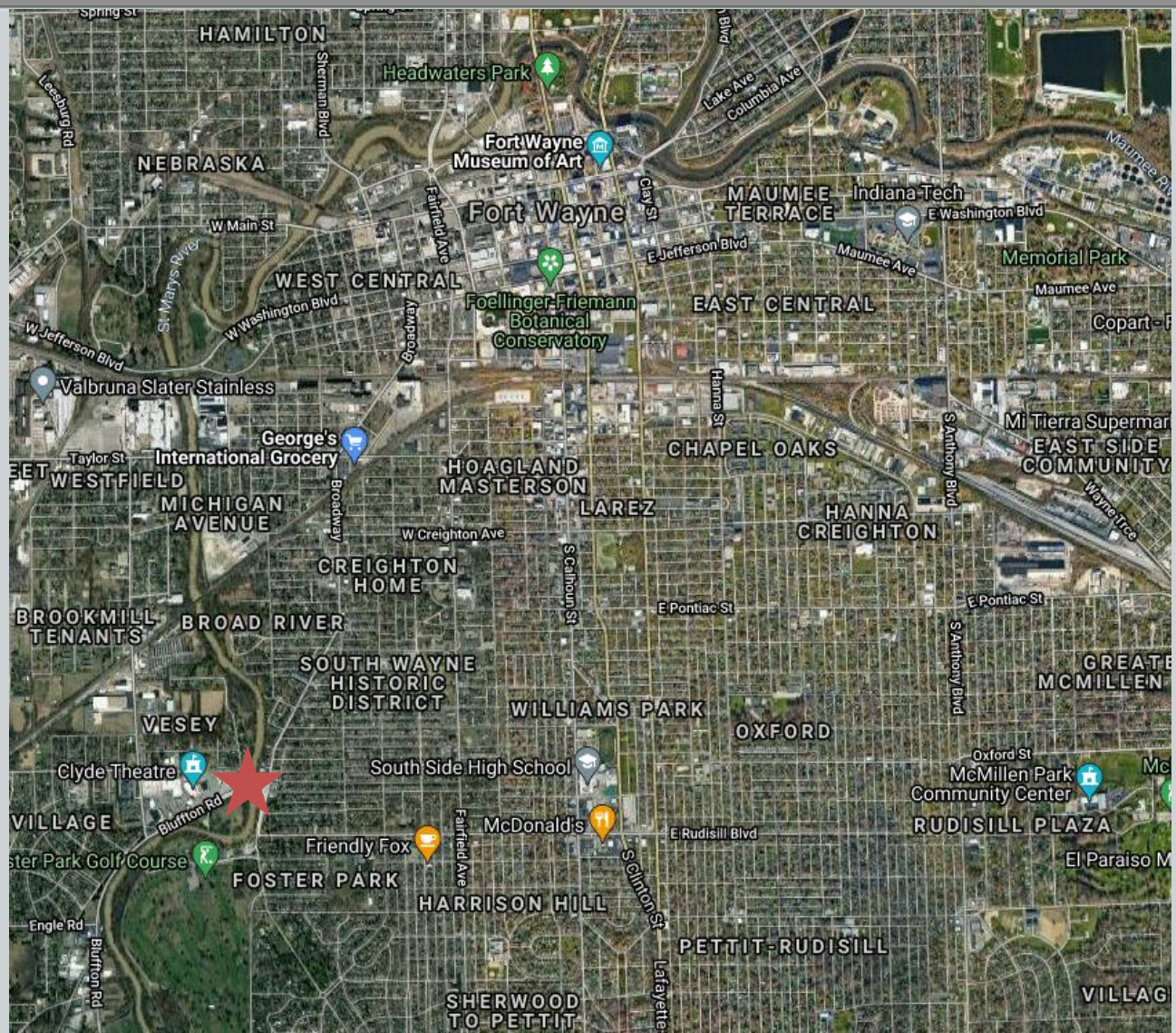


FORT WAYNE

Public Works

In Your Neighborhood

1. Purpose & Need



1. Purpose & Need



FW PUBLIC WORKS

**City
Engineering**

In Your Neighborhood



FORT WAYNE

Public Works

In Your Neighborhood

1. Purpose & Need

- Remove load postings
- Rehabilitate to lengthen life span of bridge
- Widen sidewalks on bridge for accessibility to Rivergreenway and Foster Park
- To improve scour protection measures



2. Overview of Project

Project Scope:

- Superstructure Replacement
- Substructure Rehabilitation
- Scour Countermeasures Installation
- Approach Roadway Reconstruction



2. Overview of Project

Superstructure Replacement



2. Overview of Project

Substructure
Rehabilitation
& Scour
Countermeasures
Installation



2. Overview of Project

Approach
Roadway
Reconstruction



2. Overview of Project

Notable Changes from Existing Bridge:

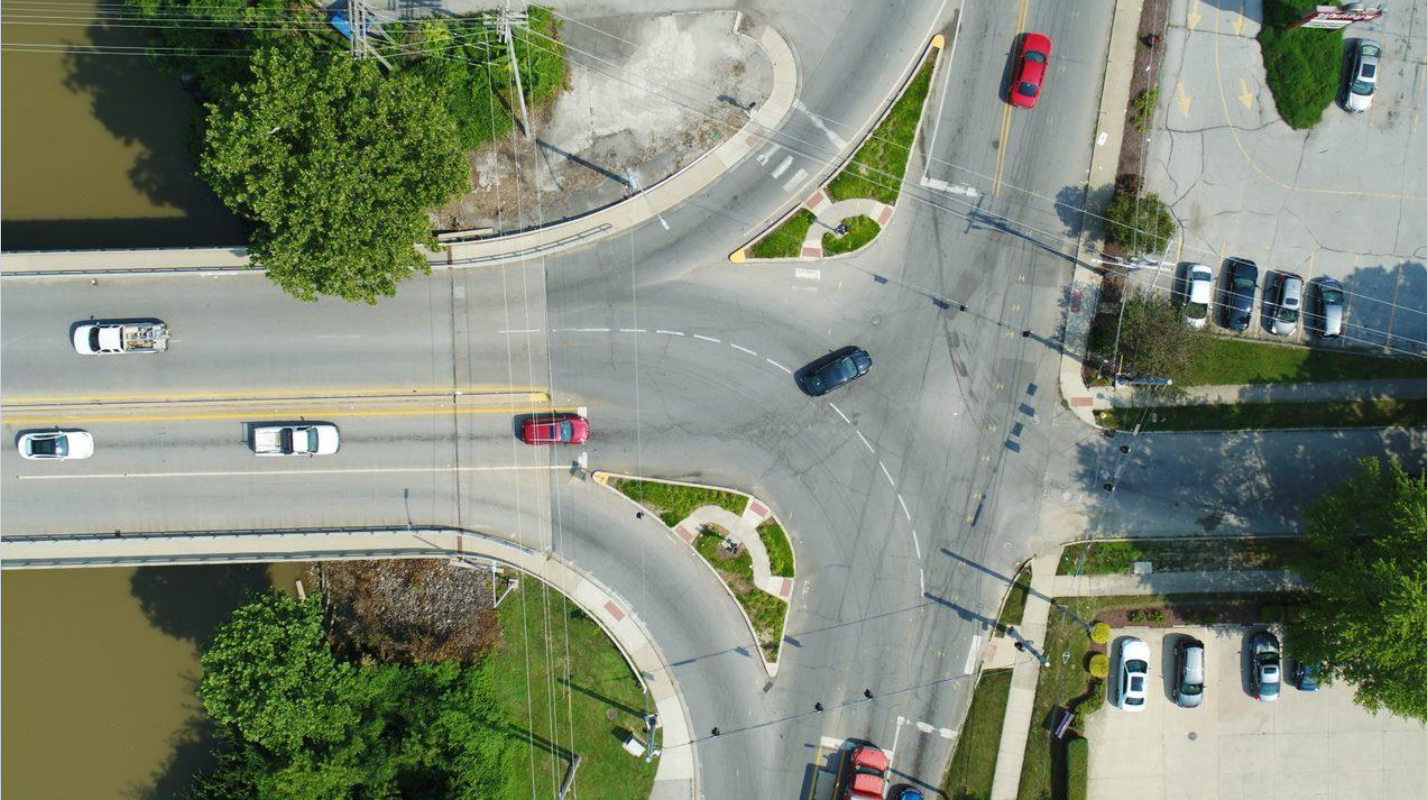
- Wider sidewalks
- Narrower travel lanes and curb offsets
- Removal of Curb Islands at Broadway Intersection
- Scenic Overlooks at Piers
- Decorative Pedestrian Railing Along Copings
- New Decorative Lighting



2. Overview of Project



FW PUBLIC WORKS
City Engineering
In Your Neighborhood



FORT WAYNE
Public Works
In Your Neighborhood

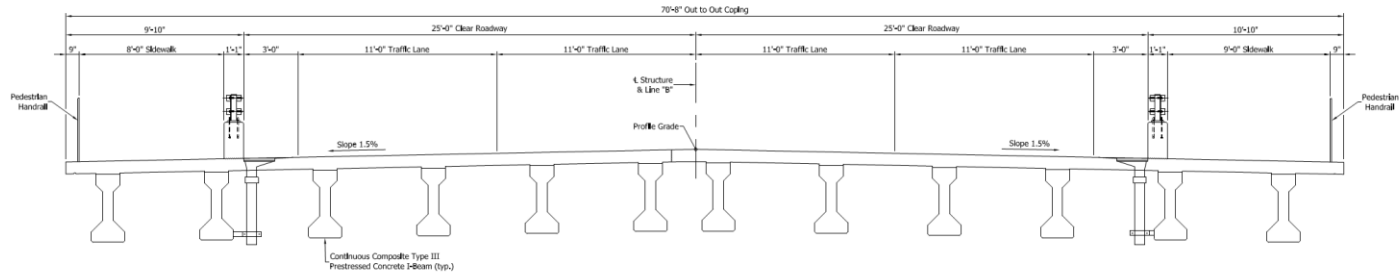
2. Overview of Project



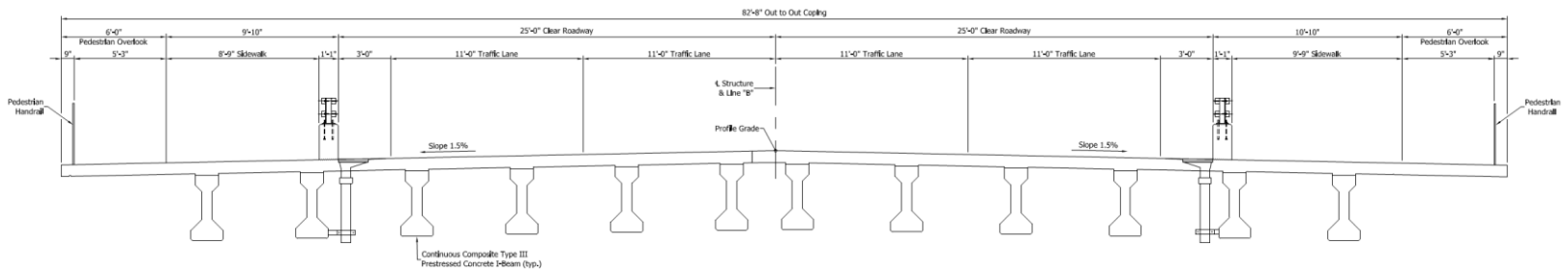
2. Overview of Project



2. Overview of Project



PROPOSED TYPICAL SECTION
Scale: 3/8"=1'-0"



PROPOSED TYPICAL SECTION AT PEDESTRIAN OVERLOOK
Scale: 3/8"=1'-0"

2. Overview of Project



Railing & Street Lights
Similar to VanBuren Bridge

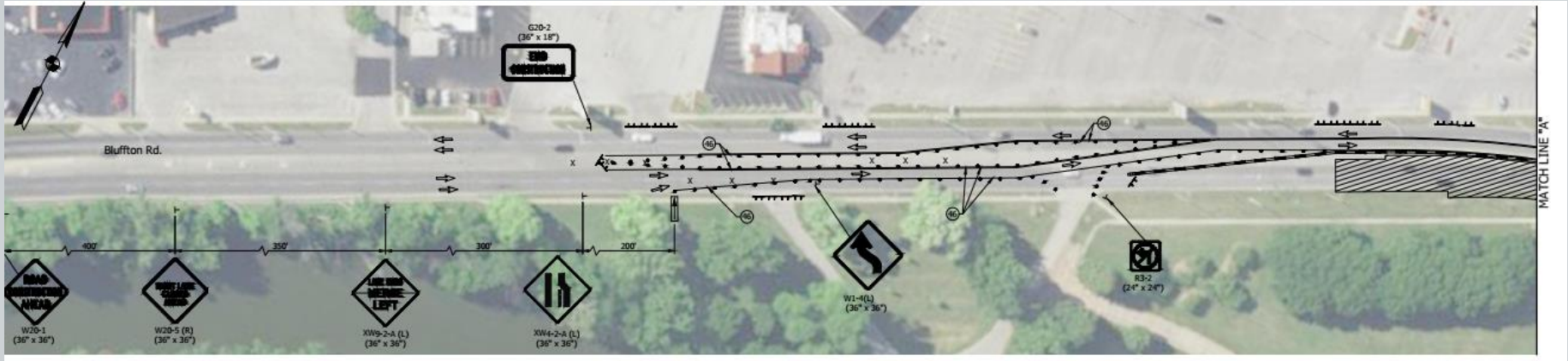


3. Maintenance of Traffic

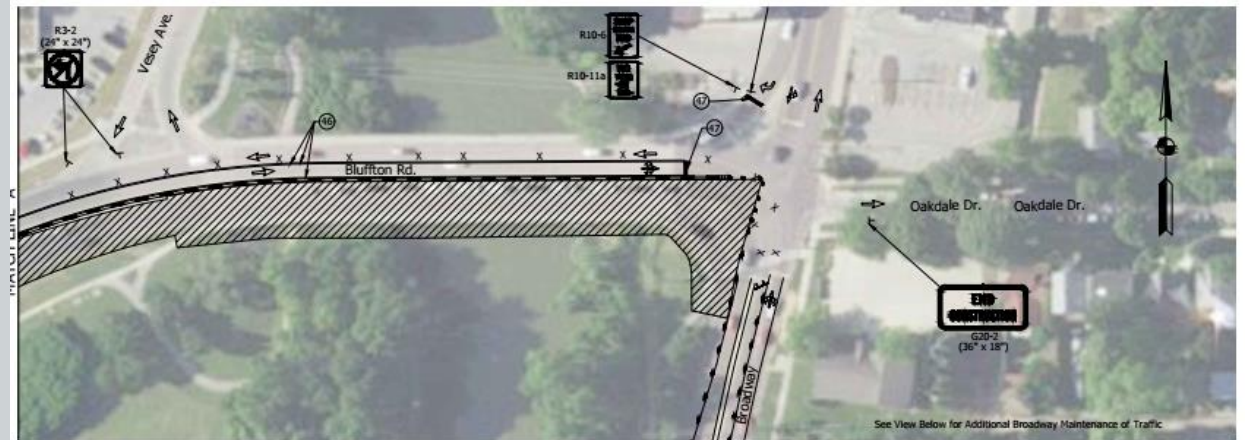
MOT Phase	Bluffton Rd Lane Closures	General Construction Items
I	South two lanes, traffic diverted onto north two lanes	Remove and replace south half of superstructure. Remove timber bridge in SW quad. Install scour countermeasures. Remove southeast curb island.
II	North two lanes, traffic diverted onto south two lanes. 1 week of complete roadway closure.	Remove and replace north half of superstructure. Remove northeast curb island.
III	South exterior lane. Eastbound traffic merged into interior lane. Westbound traffic unaltered.	Repair River Greenway Trail below bridge.



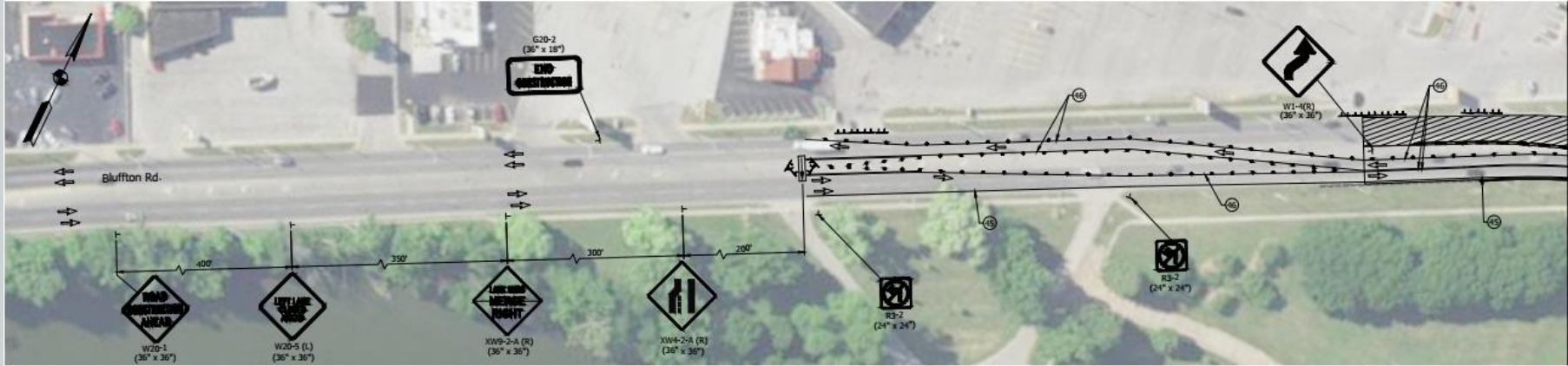
3. Maintenance of Traffic



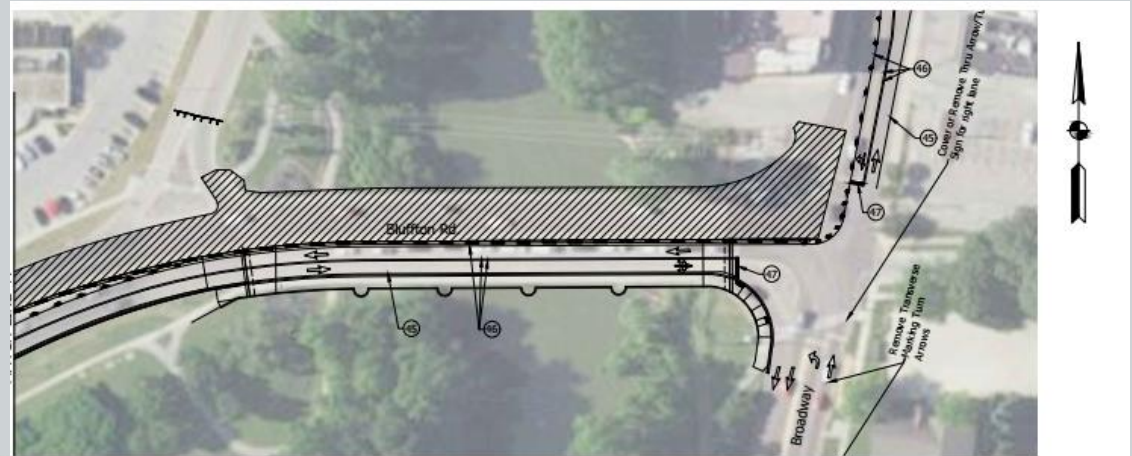
Phase I: South Lane Closure



3. Maintenance of Traffic



Phase II: North Lane Closure



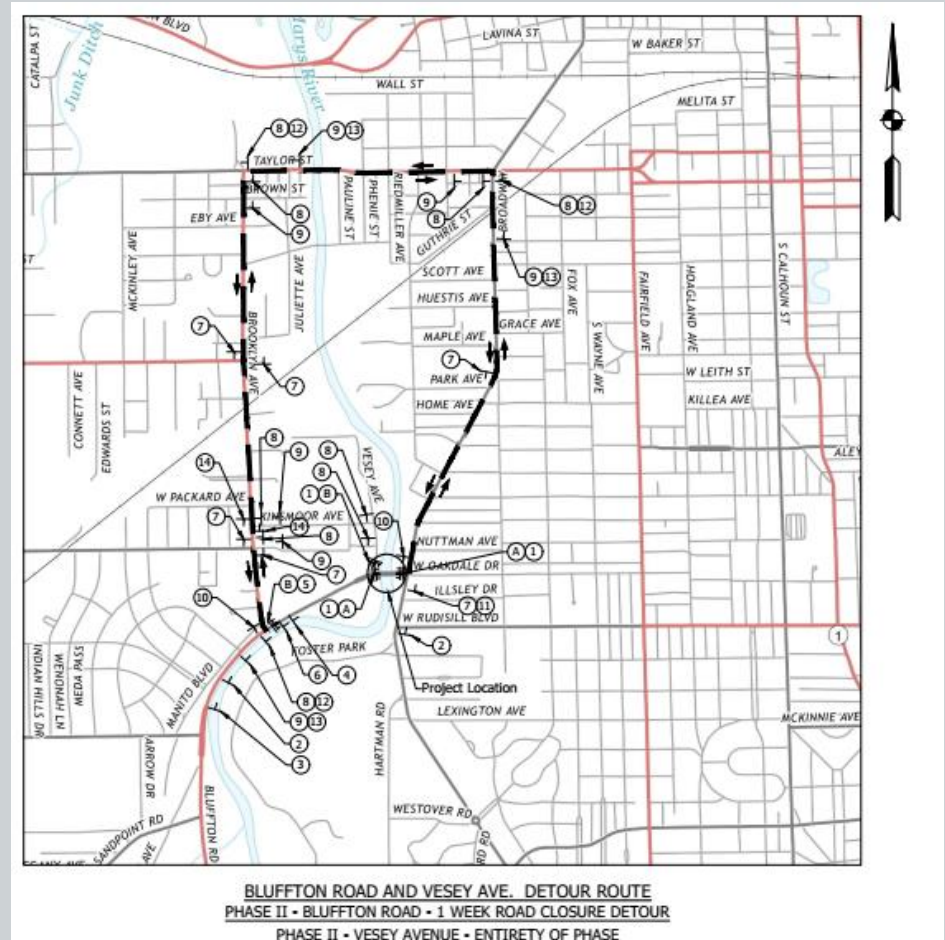
3. Maintenance of Traffic



Bridge Closures -

1 Week Closures:

- Removing Old Bridge Beams
- Setting New Bridge Beams



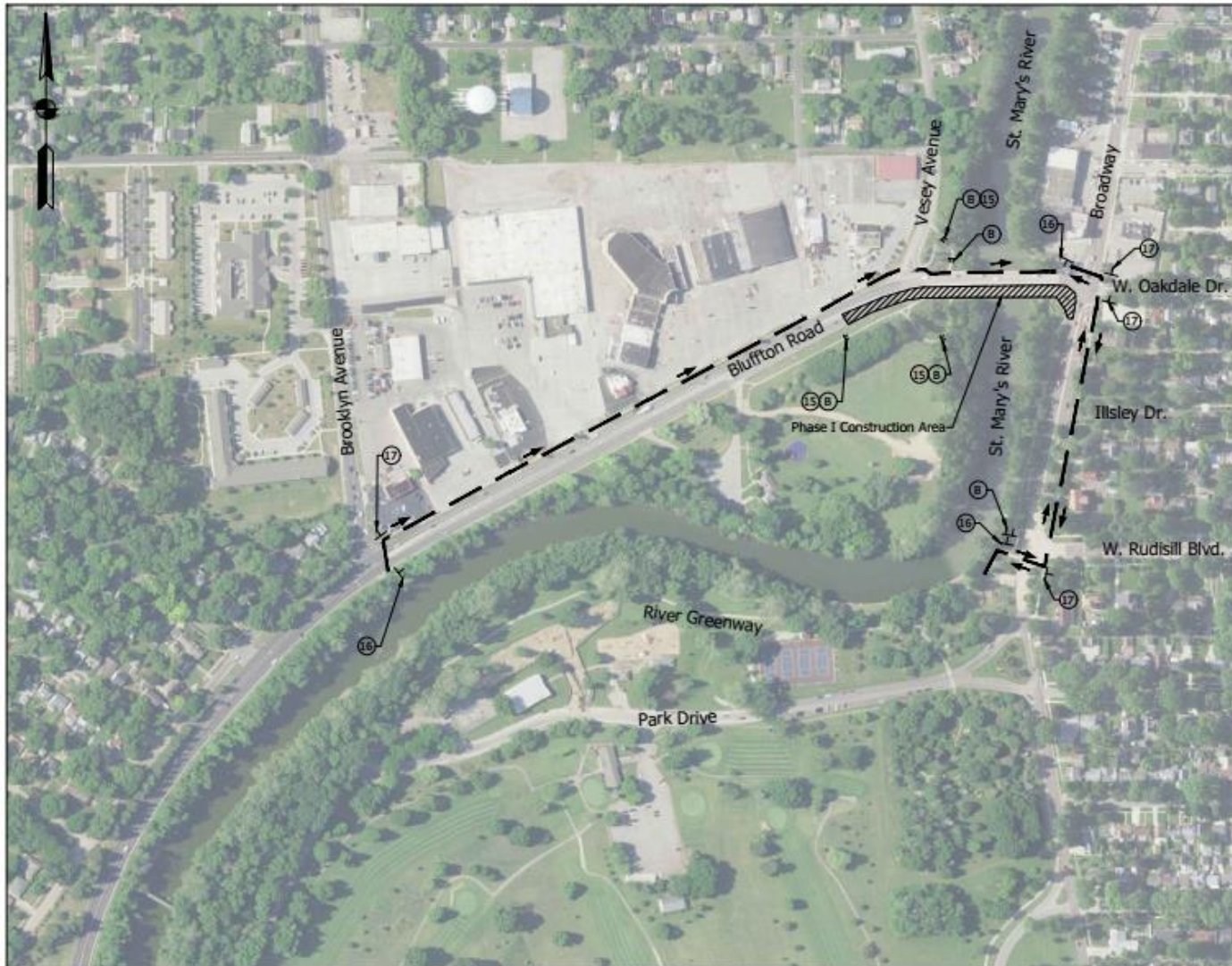
3. Maintenance of Traffic



FW PUBLIC WORKS

City Engineering

In Your Neighborhood



PEDESTRIAN DETOUR ROUTE PHASES I & III



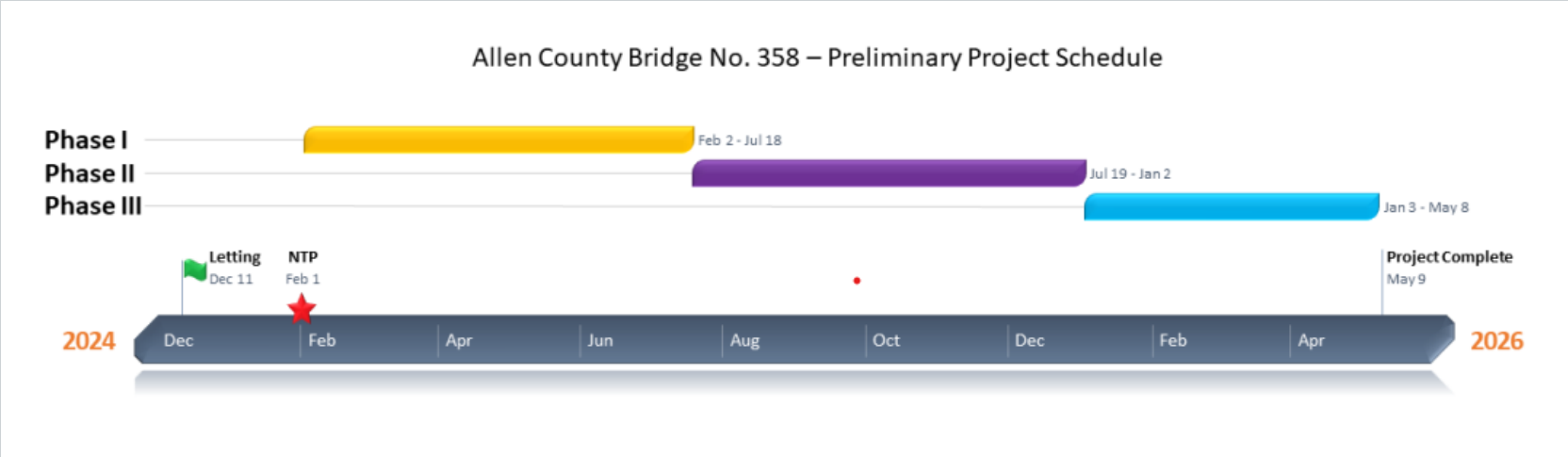
4. Tentative Project Timeline



Stage 2 (Preliminary Plans)	Spring 2022
Public Hearing	Fall 2022
Environmental Document	Spring 2023
Right-of-Way Acquisition	Summer 2024
Stage 3 (Final Plans)	Summer 2024
Final Tracings	Fall 2024
INDOT Letting (Bidding)	12/11/2024



4. Tentative Project Timeline



Project Contacts



FW PUBLIC WORKS

**City
Engineering**

In Your Neighborhood

City of Fort Wayne

Patrick W. Zaharako, PE, MBA

City Engineer

Patrick.Zaharako@cityoffortwayne.org

(260) 427-2789

Kelly White, PE

Assistant City Engineer

Kelly.White@cityoffortwayne.org

(260) 427-2693

USI Consultants – Bridge Department Manager

Brandon Arnold, PE

barnold@usiconsultants.com

(219) 369-6545

Indiana Department of Transportation

Josh Geiger- Project Manager

JoGeiger@indot.IN.gov

(260) 969-8296



FORT WAYNE

Public Works

In Your Neighborhood